

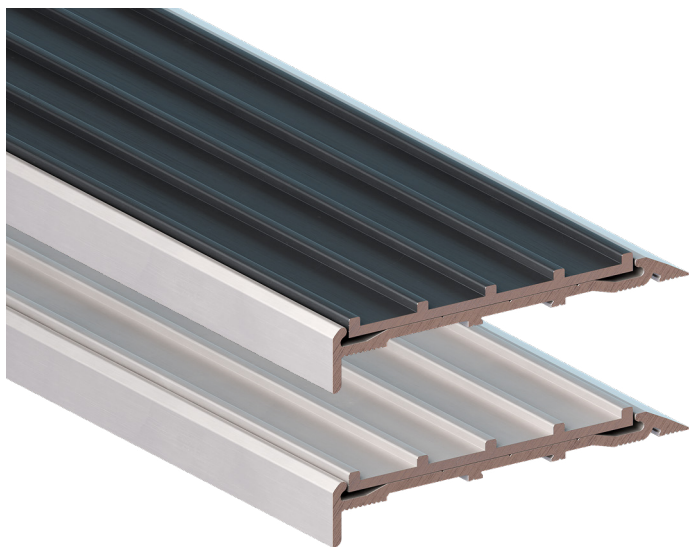
PEMKO® MODULAR + STITCH SURFACE EDGING SYSTEM 10X63X4MM

P5
GRIP

PRODUCT CODES: DESCRIPTION:

DE0450C	NATURAL ANODISED With natural anodised insert
DE0450B	NATURAL ANODISED With black anodised insert

RANGE	Stair Nosing & Edging
DESIGN	Modular Surface + Stitch
MATERIAL	6063 T5 extruded aluminium alloy
LOCATION	Indoor or Outdoor



FEATURES & BENEFITS

An extruded aluminium holder designed for tiled stairs, that allows the insertion of stair edging products using double-sided self-adhesive tape to offer customisation of colour and contrast

Supplied with DTAC PEMKO® Stitch Edging 50x3mm

Offers both adhesive and screw-fix options, with screw heads concealed under the inserted edging for a concealed fix

Designed by DTAC in Australia

Suitable for all stable finished outdoor or indoor surfaces and substrates

Complies with the NCC (D4D4 Parts of buildings to be accessible) where stated and Disability (Access to Premises—Buildings) Standards to meet the deemed-to-satisfy-provisions

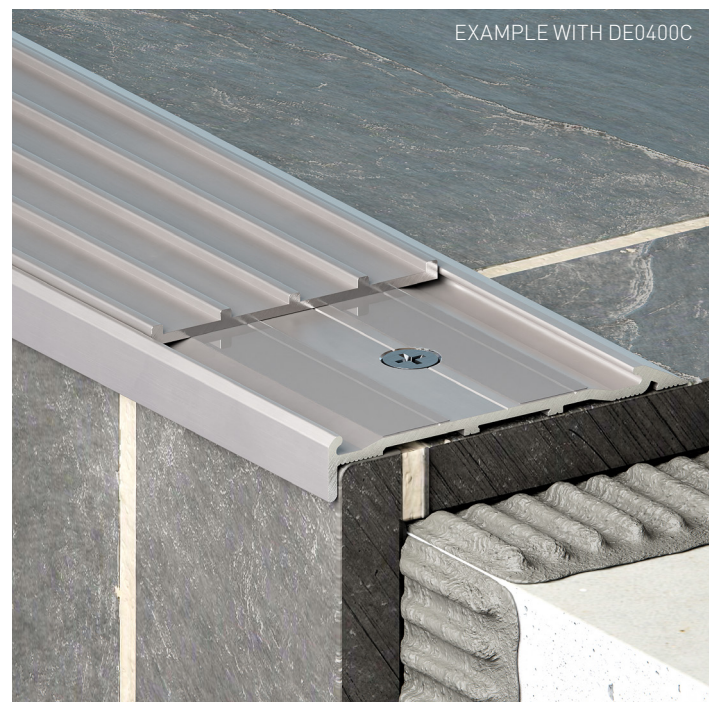
Complies with slip resistance requirements as detailed in HB 198

SLIP RESISTANCE TESTING

Refer Stitch Technical Data Sheet for test data

LUMINANCE TESTING

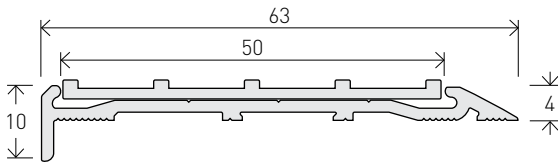
Refer Stitch Technical Data Sheet for test data



PEMKO® MODULAR + STITCH SURFACE EDGING SYSTEM 10X63X4MM FINISHES & SIZES

AVAILABLE FINISHES & SIZES

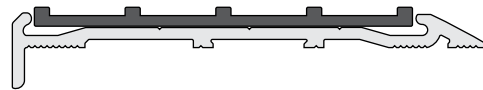
HARD NATURAL ANODISED (25µm)



CODE DE0450C

SIZE H10 x W63 x T4 - L3200mm

HARD BLACK ANODISED (40µm)

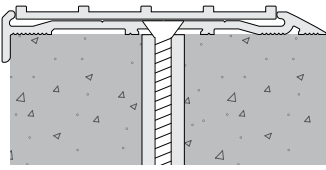


CODE DE0450B

SIZE H10 x W63 x T4 - L3200mm

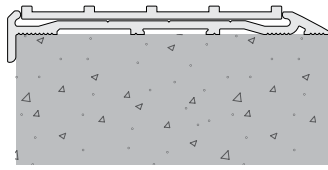
PEMKO® MODULAR + STITCH SURFACE EDGING SYSTEM 10X63X4MM INSTALLATION & APPLICATION

SUBSTRATE Stone / Masonry / Timber / Vinyl



CODE DE0450C / DE0450B

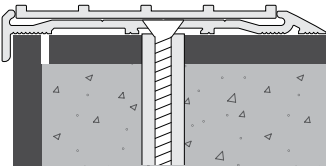
FIXING Adhesive.
Optional screw-fix
(Screws and plugs
available upon request)



CODE DE0450C / DE0450B

FIXING Adhesive only

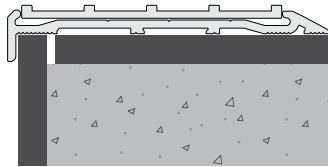
SUBSTRATE Vitrified Porcelain / Ceramics / Glass / Metals



CODE DE0450C / DE0450B

FIXING Adhesive.
Optional screw-fix
(Screws and plugs
available upon request)

NOTE Ensure grout line is discrete
as illustrated



CODE DE0450C / DE0450B

FIXING Adhesive only

NOTE Ensure grout line is discrete
as illustrated