

PEMKO® RUGGED™ EDGING 10X70X3MM

P5
GRIP

PRODUCT CODES: DESCRIPTION:

DEF0010W	WHITE
----------	-------

RANGE	Stair Nosing & Edging
-------	-----------------------

DESIGN	Rugged™
--------	---------

MATERIAL	Fibre Glass Reinforced Polymer
----------	--------------------------------

LOCATION	Indoor or outdoor
----------	-------------------

FEATURES & BENEFITS

Continuous band of hard wearing, fibre glass reinforced polymer extrusion

Available in exclusive premium quality angle profiles

Suitable for all stable finished outdoor or indoor surfaces and substrates

Complies with the NCC (D4D4 Parts of buildings to be accessible) where stated and Disability (Access to Premises—Buildings) Standards to meet the deemed-to-satisfy-provisions

Complies with slip resistance requirements as detailed in HB 198

SLIP RESISTANCE TESTING

Important information: To determine a classification of a slip resistance rating, see Australian Standards Hand Book 198 (HB 198), a Guide to the specification and testing of slip resistance of pedestrian surfaces. This document outlines the minimum ratings of a location and situation of a pedestrian surface.

TEST	AS 4586 APPENDIX A: Wet Pendulum Test
------	---------------------------------------

TRL 55 SLIDER	= 79 CLASS = P5
---------------	-----------------

LUMINANCE TESTING

Important information: To determine a luminance contrast between a substrate and the DTAC EDGING, see: AS 1428.1:2009.

TEST	AS 1428.1 APPENDIX B PARAGRAPH B3
------	-----------------------------------

LIGHT REFLECTANCE VALUE / WET	= 59.99
-------------------------------	---------

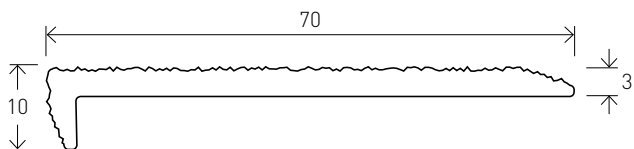
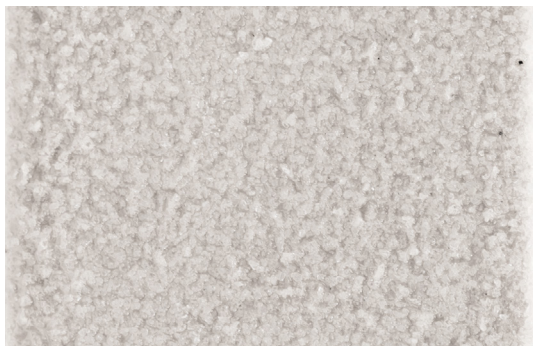
LIGHT REFLECTANCE VALUE / DRY	= 60.37
-------------------------------	---------



PEMKO® RUGGED™ EDGING 10X70X3MM FINISHES & SIZES

AVAILABLE FINISHES & SIZES

WHITE

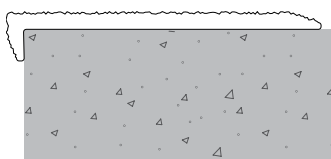


CODE DEF0010W

SIZE H10 x W70 x T3 - L3200mm

PEMKO® RUGGED™ EDGING 10X70X3MM INSTALLATION & APPLICATION

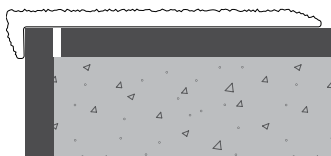
SUBSTRATE Stone / Masonry / Timber / Vinyl



CODE DEF0010W

FIXING Adhesive

SUBSTRATE Vitrified Porcelain / Ceramics / Glass

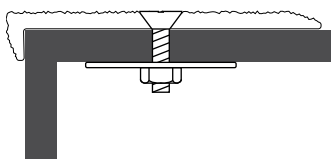


CODE DEF0010W

FIXING Adhesive

NOTE Ensure grout line is
discrete as illustrated

SUBSTRATE Metals



CODE DEF0010W

FIXING Screw-fixed

NOTE Screw-fixed onto metal
stairs and gratings (fixings
not supplied).