



# INSTALLATION MANUAL

## INTEGRATED TACTILE PLATES

**DTAC PTY LTD**  
ABN 41 093 070 127

Unit 4, 11-12 Phillip Court  
Port Melbourne Victoria  
Australia 3207

PO Box 5059  
South Melbourne Victoria  
Australia 3205

PEMKO<sup>®</sup>  
T 1300 793 478

[estimating@dtac.com.au](mailto:estimating@dtac.com.au)  
[dtac.com.au](http://dtac.com.au)

© DTAC Pty Ltd 2024

## USER/INSTALLER

It is imperative that everyone installing DTAC products carefully read this document prior to commencement of installation. DTAC Pty Ltd will not be held liable for the misuse of their products or any damage whatsoever caused as a result of non-compliance with procedures as described in this document.

DTAC Pty Ltd will only honour the product guarantee for the DTAC Tactiles when the product has been installed in accordance with the specified instructions, equipment and products as described within this document.

## TABLE OF CONTENTS

<b>EQUIPMENT REQUIRED FOR INSTALLATION</b> .....	3
<b>INSTALLATION</b> .....	3

## IMPORTANT NOTICE

The user/installer is responsible for determining whether the adhesive product is fit for a particular purpose and suitable for the user's/installer's method of application. Please remember that many factors can affect the use and performance of an adhesive product in a particular application.

The factors include but are not limited to: the surface preparation of those materials, the product selected for use, the condition in which the product is used and the time and environmental conditions in which the product is expected to perform.

Given the many factors that can affect the use and performance of an adhesive product, some of which are uniquely within the user's/installer's knowledge and control, it is essential the user/installer evaluate the adhesive product to determine where it is fit for a particular purpose and suitable for the user's/installer's method of application.

If in doubt, always consult with a DTAC Technical Representative prior to commencement of any works.

**NOTE:** The user/installer should at all times observe the manufacturer's specifications and if required, seek additional information from an authorised DTAC representative.

**O.H.S.:** The user/installer should read in full and be familiar with the precautions to take to ensure the safe use of DTAC products. When using adhesives and cleaners, DTAC recommends wearing latex or vinyl gloves and a respirator that complies with Australia Standards AS1715 & AS1716.

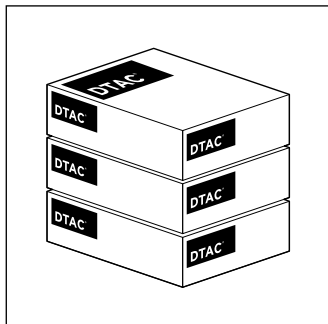
## LIGHT REFLECTANCE VALUE (LRV)

**IMPORTANT:** An LRV testing review is required prior to installation.

To determine a luminance contrast between a substrate and the DTAC Tactile, see: AS/NZS 1428.4.1:2009 and AS 1428.1:2021.



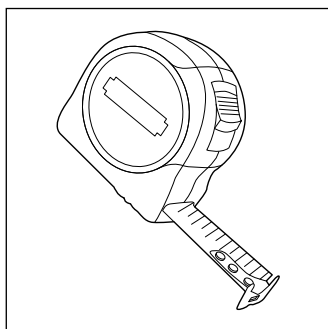
## EQUIPMENT REQUIRED FOR INSTALLATION



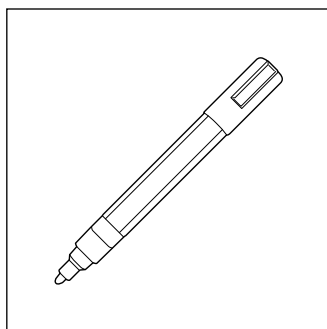
DTAC Tactile Products



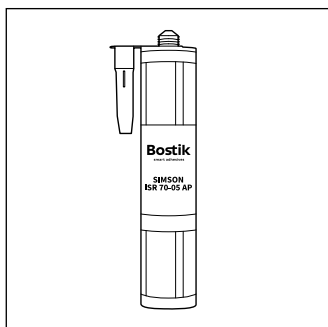
Australian Standards Document



Measuring Tape (Metric)



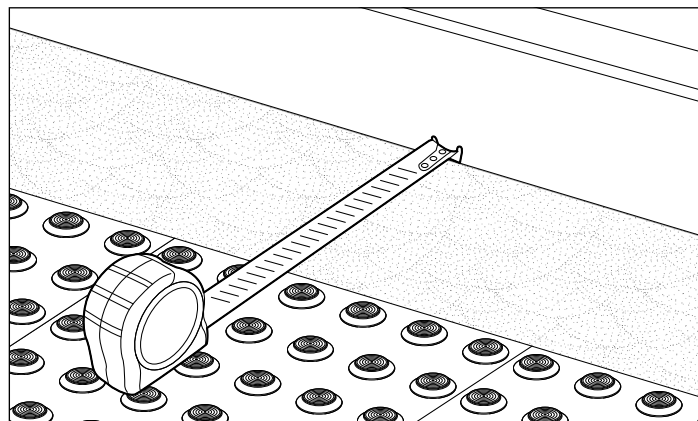
White Paint Pen



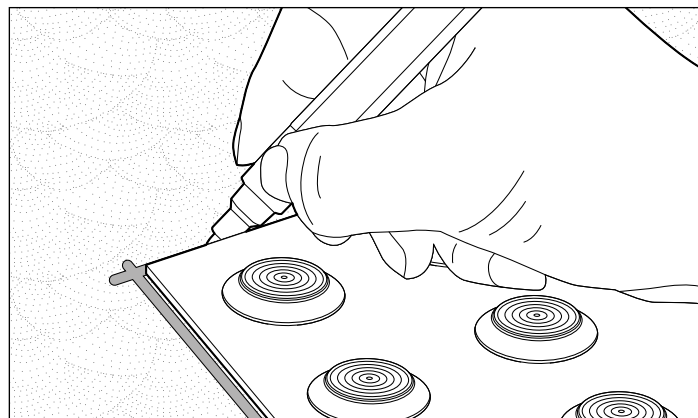
Bostik Simson ISR 70-05 Anchor  
Fix (290ml Cartridge)  
**(Product Code: DTC0040)**

## INSTALLATION

1. Ensure the surface/substrate is clean, dry and free of grease, oil and dust.



2. Position DTAC Tactile Plate with a Measuring Tape according to AS/NZS 1428.4



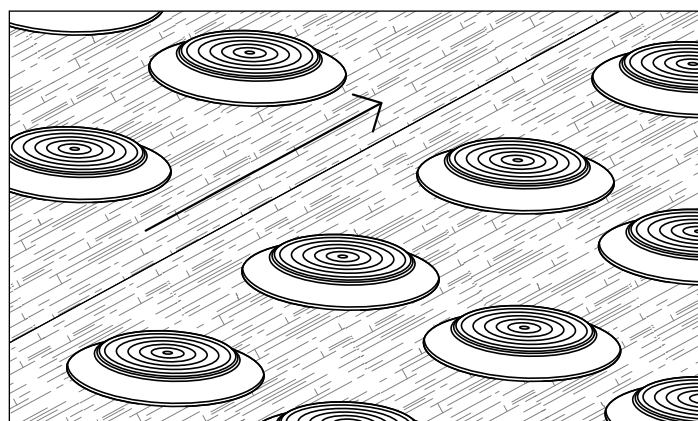
3. Using a White Paint Pen, mark the corners of the Tactile layout.



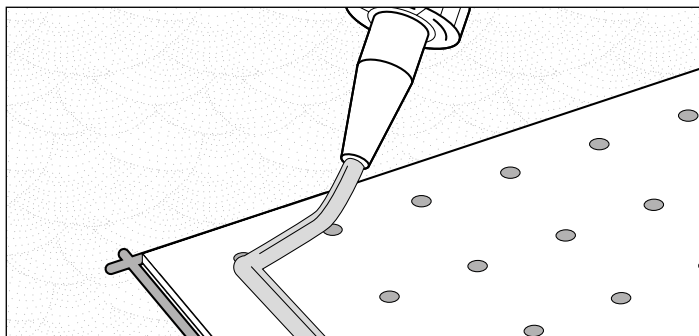
### INSTALLATION TIP

The Integrated Tactile Plates have a grain pattern on the surface of the stainless steel.

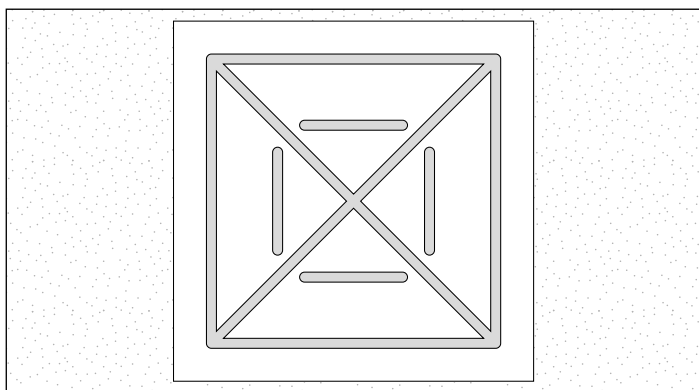
For best results, ensure the grain faces the same way on all plates.



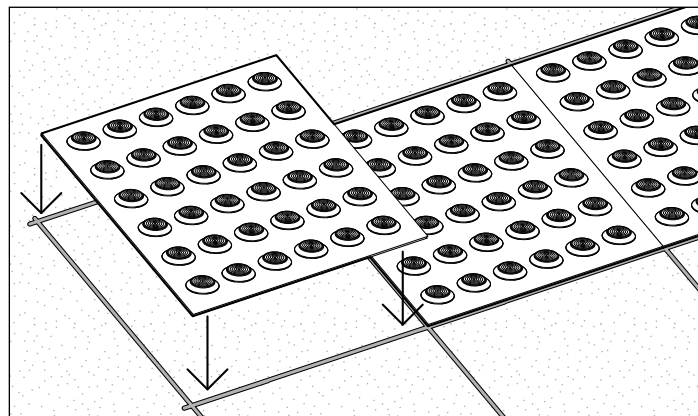
## INSTALLATION



4. Using the Bostik Simson ISR 70-05 Anchor Fix (**Product Code: DTC0040**) apply glue to the underside of the Tactile Plates.



5. Ensure you follow a gluing pattern like the one shown above for the best results.



6. Position the plates on the metal substrate. Ensure that the 'grain' of the plates face the same way. Inspect the installation.

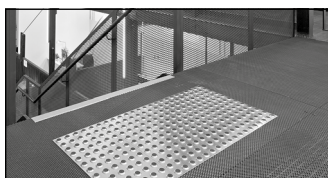


**IMPORTANT NOTE:** The tactile plates must remain undisturbed until full adhesive curing time has elapsed.



**IMPORTANT NOTE:** If drilling the plates, it is best practice to also glue them onto the substrate. This will alleviate installation problems that come up such as grout lines, small blow-outs or gaps in the substrate.

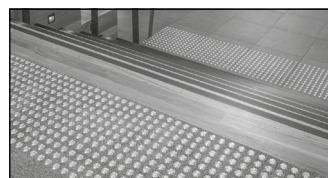
## OTHER DTAC PRODUCTS



INTEGRATED TACTILES



DIRECTIONAL TACTILES



CARPET TACTILE SYSTEMS



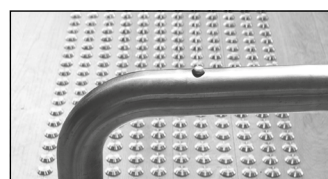
STAIR NOSING & EDGING



THRESHOLDS & TRANSITION STRIPS



URBAN EDGE PROTECTORS



HANDRAIL TACTILE INDICATORS



CONSUMABLES