

PEMKO® THRESHOLD RAMP (50x8mm)

PRODUCT CODES: DESCRIPTION:

| | |
|-----------------|---------------------------------------|
| DP1121 | 1000MM |
| DP1122 | 2000MM |
| DP1123 | 3000MM |
| RANGE | Pemko® Thresholds & Transition Strips |
| LOCATION | Door sill |
| MATERIAL | 6060 T5 extruded aluminium alloy |

FEATURES & BENEFITS

A medium duty threshold plate which can be positioned back to back to form a two way threshold ramp conforming to NCC D3D16 Thresholds (b).

Can be used in conjunction with door bottom seals to prevent rain, draughts, noise and smoke infiltration.

Can also be used to provide a ramped frame for internal door mats and tiles.

Suitable for door sill applications

APPROVALS

UL: R37913

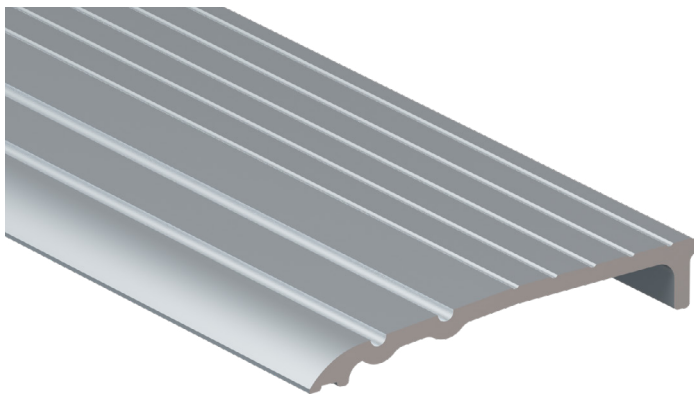
ANSI/BHMA: A156.21

ACCESS & MOBILITY

AUS: NCC D3D16 & D4D4.
AS1428.1:2009 Part 10.5. AS1428.1:2021 Part 7.5.

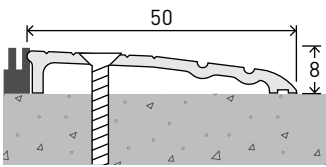
NZ: NZBC D1/AS1 1.3.2

UK/EU: Approved Document M

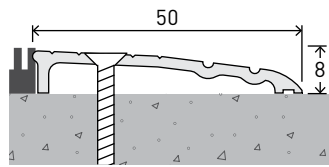


PEMKO® THRESHOLD RAMP (50x8mm) INSTALLATION & APPLICATION

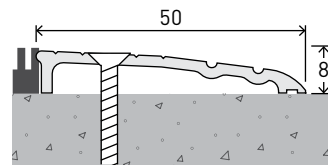
LOCATION Door Sill



CODE DP1121
SIZE W50 x H8 - L1000mm
FIXING Screw-fixed (screws supplied)

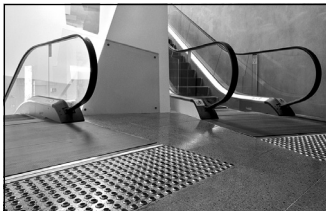


CODE DP1122
SIZE W50 x H8 - L2000mm
FIXING Screw-fixed (screws supplied)

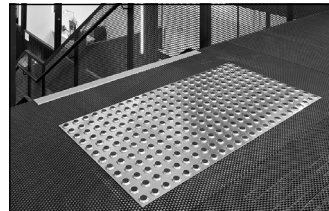


CODE DP1123
SIZE W50 x H8 - L3000mm
FIXING Screw-fixed (screws supplied)

OTHER DTAC PRODUCTS



WARNING TACTILES



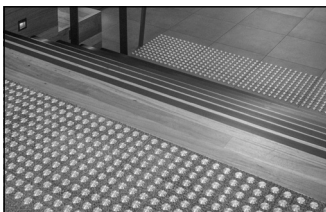
INTEGRATED TACTILES



DIRECTIONAL TACTILES



STAIR NOSING & EDGING



CARPET TACTILE SYSTEMS



THRESHOLDS & TRANSITION STRIPS



URBAN EDGE PROTECTORS



HANDRAIL TACTILE INDICATORS