

PEMKO® TRANSITION STRIP (40x7mm)

PRODUCT CODES: DESCRIPTION:

DP0661	1000MM
DP0662	2000MM
DP0663	3000MM

RANGE	Pemko® Thresholds & Transition Strips
LOCATION	Door sill of internal doors with carpeted sills
MATERIAL	6060 T5 extruded aluminium alloy

FEATURES & BENEFITS

A flush fitting threshold plate designed for use on internal doors with carpeted floors.

Can be used in conjunction with door bottom seals to provide an optimum sealing surface as carpets can flatten and thus reduce sealing effectiveness.

Has concealed fixings with self adhesive aluminium insert.

Suitable for door sills of internal doors with carpeted sills

APPROVALS

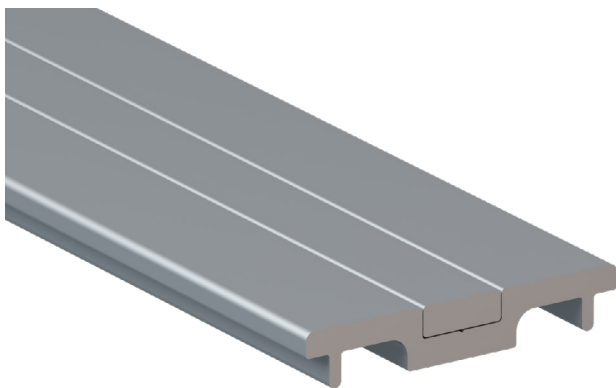
ANSI/BHMA: A156.21

ACCESS & MOBILITY

AUS: NCC D3D16 & D4D4.
AS1428.1:2009 Part 7.2. AS1428.1:2021 Part 4.2.

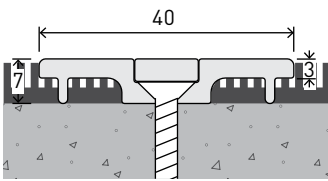
NZ: NZBC D1/AS1 1.3.2

UK/EU: Approved Document M

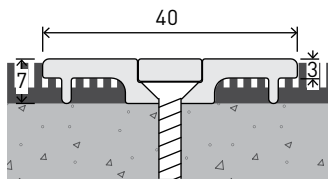


PEMKO® TRANSITION STRIP (40x7mm) INSTALLATION & APPLICATION

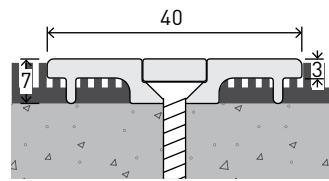
LOCATION Door Sill



CODE	DP0661
SIZE	W40 x H7 - L1000mm
FIXING	Concealed screw-fixed (screws supplied)

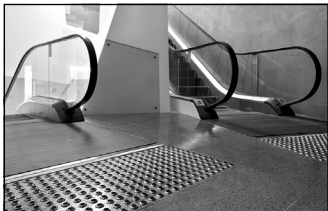


CODE	DP0662
SIZE	W40 x H7 - L2000mm
FIXING	Concealed screw-fixed (screws supplied)

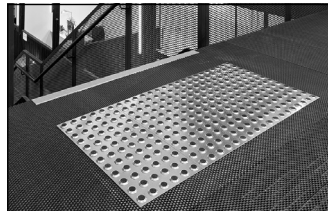


CODE	DP0663
SIZE	W40 x H7 - L3000mm
FIXING	Concealed screw-fixed (screws supplied)

OTHER DTAC PRODUCTS



WARNING TACTILES



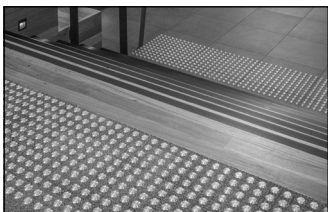
INTEGRATED TACTILES



DIRECTIONAL TACTILES



STAIR NOSING & EDGING



CARPET TACTILE SYSTEMS



THRESHOLDS & TRANSITION STRIPS



URBAN EDGE PROTECTORS



HANDRAIL TACTILE INDICATORS