

# PEMKO® THRESHOLD PLATE (25x5mm)

## PRODUCT CODES: DESCRIPTION:

DP0131 1000MM

DP0132 2000MM

DP0133 3000MM

**RANGE** Pemko® Thresholds & Transition Strips

**LOCATION** Door Sill

**MATERIAL** 6060 T5 extruded aluminium alloy

## FEATURES & BENEFITS

A low profile threshold plate that is ideal for use in conjunction with door bottom seals to prevent rain, draughts, noise and smoke infiltration.

Suitable for door sill applications

## APPROVALS

**UL:** R37913

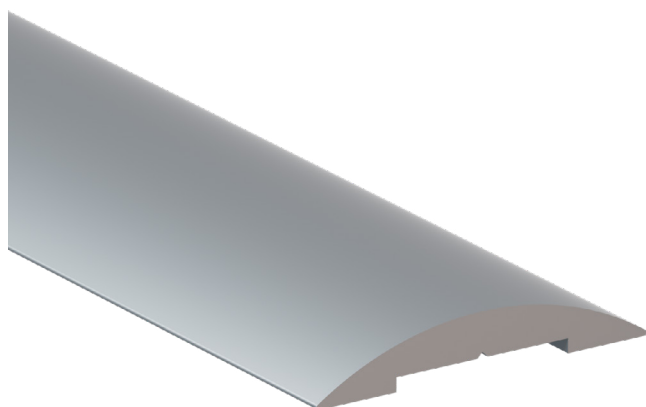
**ANSI/BHMA:** A156.21

## ACCESS & MOBILITY

**AUS:** NCC D3D16 & D4D4.  
AS1428.1:2009 Part 7.2. AS1428.1:2021 Part 4.2.

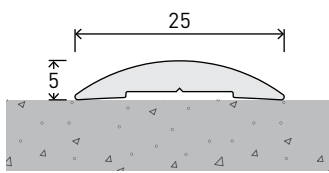
**NZ:** NZBC D1/AS1 1.3.2

**UK/EU:** Approved Document M

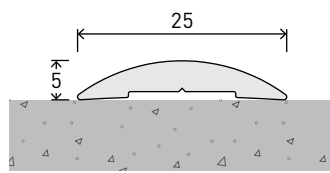


# PEMKO® THRESHOLD PLATE (25x5mm) INSTALLATION & APPLICATION

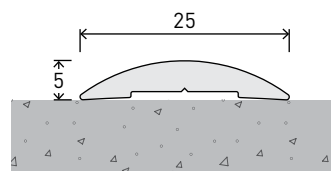
**LOCATION** Door Sill



**CODE** DP0131  
**SIZE** W25 x H5 - L1000mm  
**FIXING** Screw-fixed or adhesive (screws supplied)

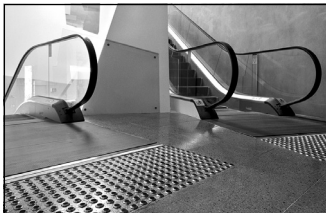


**CODE** DP0132  
**SIZE** W25 x H5 - L2000mm  
**FIXING** Screw-fixed or adhesive (screws supplied)

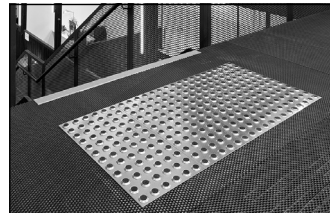


**CODE** DP0133  
**SIZE** W25 x H5 - L3000mm  
**FIXING** Screw-fixed or adhesive (screws supplied)

## OTHER DTAC PRODUCTS



WARNING TACTILES



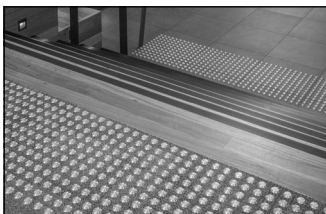
INTEGRATED TACTILES



DIRECTIONAL TACTILES



STAIR NOSING & EDGING



CARPET TACTILE SYSTEMS



THRESHOLDS & TRANSITION STRIPS



URBAN EDGE PROTECTORS



HANDRAIL TACTILE INDICATORS