

PEMKO® THRESHOLD PLATE (100x6mm)

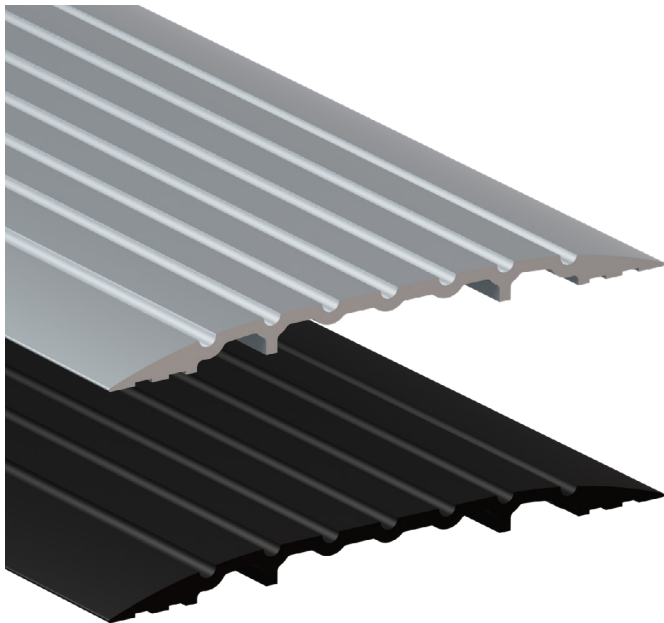
PRODUCT CODES: DESCRIPTION:

DP1161	NATURAL ANODISED - 1000MM
DP1161BK	BLACK ANODISED - 1000MM
DP1162	NATURAL ANODISED - 2000MM
DP1162BK	BLACK ANODISED - 2000MM
DP1163	NATURAL ANODISED - 3000MM
DP1163BK	BLACK ANODISED - 3000MM

RANGE Thresholds & Transition Strips

LOCATION Door sill

MATERIAL 6060 T5 extruded aluminium alloy



FEATURES & BENEFITS

A low profile threshold plate that can be used in conjunction with door bottom seals to prevent rain, draughts, noise and smoke infiltration.

Suitable for use with most floor pivots.

Suitable for door sill applications

APPROVALS

ANSI/BHMA: A156.21

ACCESS & MOBILITY

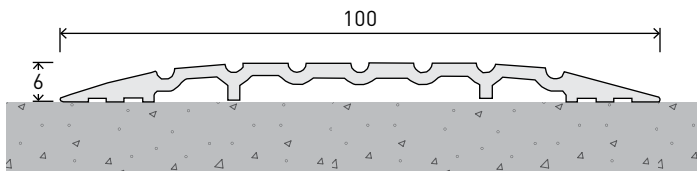
AUS: NCC D3D16 & D4D4.
AS1428.1:2009 Part 7.2. AS1428.1:2021 Part 4.2.

NZ: NZBC D1/AS1 1.3.2

UK/EU: Approved Document M

PEMKO® THRESHOLD PLATE (100x6mm) INSTALLATION & APPLICATION

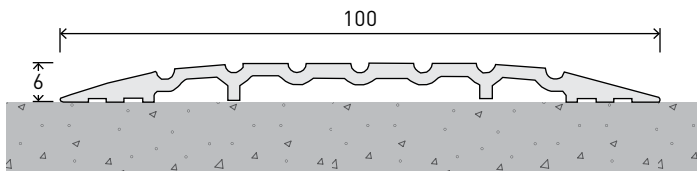
LOCATION Door Sill



CODE DP1161 / DP1161BK

SIZE W100 x H6 - L1000mm

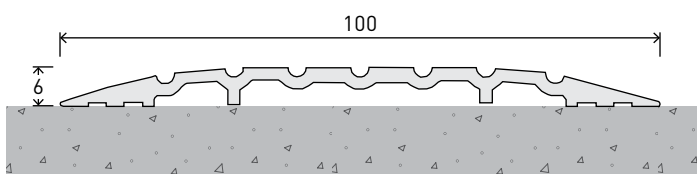
FIXING Screw-fixed or adhesive (screws supplied)



CODE DP1162 / DP1162BK

SIZE W100 x H6 - L2000mm

FIXING Screw-fixed or adhesive (screws supplied)



CODE DP1163 / DP1163BK

SIZE W100 x H6 - L3000mm

FIXING Screw-fixed or adhesive (screws supplied)