

STAINLESS STEEL TERRACED CARPET TACTILE SYSTEM

P5
GRIP

PRODUCT CODES:	DESCRIPTION:
DT0113	LOW PILE CARPET
DT0116	HIGH PILE CARPET

RANGE	Carpet Tactile System
DESIGN	Terraced
MATERIAL	316 marine grade stainless steel
LOCATION	Indoor
DIMENSIONS	OUTER DIA: 35mm TOP DIA: 25mm THICKNESS: 5mm



FEATURES & BENEFITS

Machined, concentric circle design on the horizontal face with a terraced slip resistant outer edge

Complies with the NCC [D4D9 Tactile Indicators] and Disability (Access to Premises—Buildings) standards to meet the deemed-to-satisfy-provisions

Complies with slip resistance requirements as detailed in HB 198

SLIP RESISTANCE TESTING

Important information: To determine a classification of a slip resistance rating, see Australian Standards Hand Book 198 (HB 198), a Guide to the specification and testing of slip resistance of pedestrian surfaces. This document outlines the minimum ratings of a location and situation of a pedestrian surface.

TEST	AS 4586 APPENDIX A: Wet Pendulum Test
FOUR S 96 SLIDER	= 95 CLASS = P5
TRL 55 SLIDER	= 74 CLASS = P5
TEST	AS 4586 APPENDIX C: Wet/Barefoot Ramp Test
MEAN ANGLE OF INCLINATION	= 27° CLASS = C
TEST	AS 4586 APPENDIX D: Oil/Wet Ramp Test
CORRECTED MEAN OVERALL ACCEPTANCE ANGLE	= 29° CLASS = R12

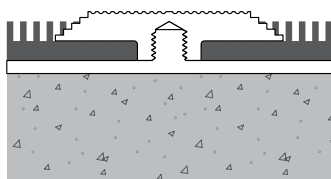
LUMINANCE TESTING

Important information: To determine a luminance contrast between a substrate and the DTAC TGSI, see: AS/NZS 1428.4.1:2009.

TEST	AS/NZS 1428.4.1 APPENDIX E PARAGRAPH E3
LIGHT REFLECTANCE VALUE / WET	= 48.24
LIGHT REFLECTANCE VALUE / DRY	= 48.57

STAINLESS STEEL TERRACED CARPET TACTILE SYSTEM INSTALLATION & APPLICATION

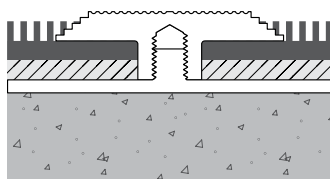
SUBSTRATE Carpet / Carpet Tiles



CODE DT0113

FIXING Screw

NOTE 3mm clearance to accept thin carpet without underlay (direct stick carpet/carpet tiles). Two stage installation process

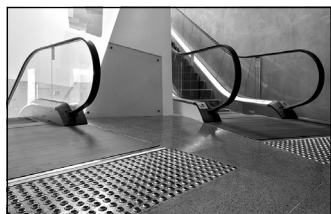


CODE DT0116

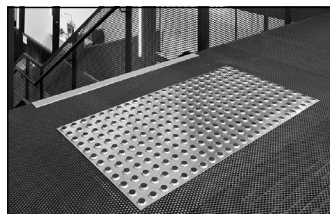
FIXING Screw

NOTE 6mm clearance to accept thick carpet with underlay (broad loom/natural sisal carpets). Two stage installation process

OTHER DTAC PRODUCTS



WARNING TACTILES



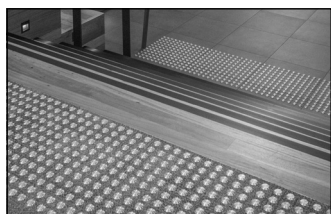
INTEGRATED TACTILES



DIRECTIONAL TACTILES



STAIR NOSING & EDGING



CARPET TACTILE SYSTEMS



THRESHOLDS & TRANSITION STRIPS



URBAN EDGE PROTECTORS



HANDRAIL TACTILE INDICATORS