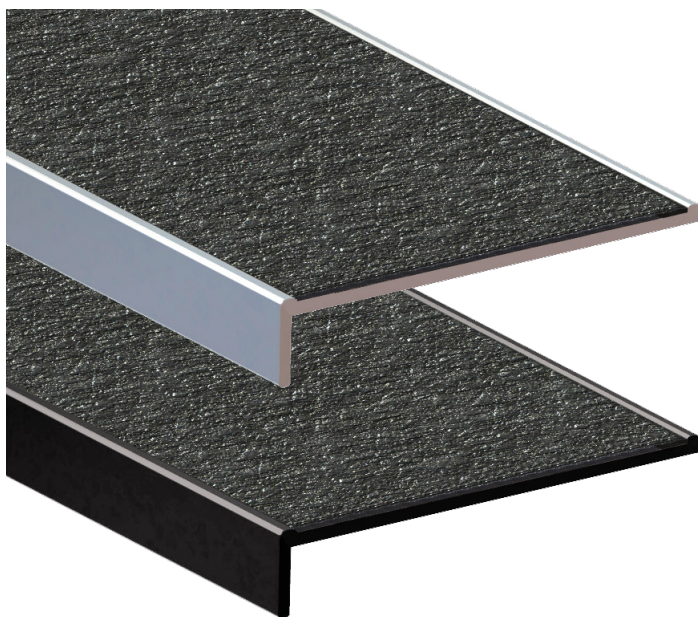


# PEMKO® SUEDE EDGING 10X55X3MM

P5  
GRIP

## PRODUCT CODES: DESCRIPTION:

<b>DE0510C</b>	<b>NATURAL ANODISED</b> Silicon carbide tape
<b>DE0510B</b>	<b>BLACK ANODISED</b> Silicon carbide tape
<b>RANGE</b>	Stair Nosing & Edging
<b>DESIGN</b>	Suede
<b>MATERIAL</b>	6063 T5 extruded aluminium alloy with silicon carbide insert
<b>LOCATION</b>	Indoor



## FEATURES & BENEFITS

Extruded continuous band of hard wearing silicon carbide inserted into cavities designed by DTAC in Australia

Available in exclusive premium quality flat, angle or carpet profiles

Suitable for all stable finished indoor surfaces and substrates only. Not suitable for external or wet areas.

Complies with the NCC (D4D4 Parts of buildings to be accessible) where stated and Disability (Access to Premises—Buildings) Standards to meet the deemed-to-satisfy-provisions

Complies with slip resistance requirements as detailed in HB 198

## SLIP RESISTANCE TESTING

Important information: To determine a classification of a slip resistance rating, see Australian Standards Hand Book 198 (HB 198), a Guide to the specification and testing of slip resistance of pedestrian surfaces. This document outlines the minimum ratings of a location and situation of a pedestrian surface.

<b>TEST</b>	AS 4586 APPENDIX A: Wet Pendulum Test
<b>FOUR S 96 SLIDER</b>	= 78 <b>CLASS</b> = P5
<b>TRL 55 SLIDER</b>	= 96 <b>CLASS</b> = P5
<b>TEST</b>	AS 4586 APPENDIX B: Dry Floor Friction Test
<b>MEAN COF</b>	= 1.05 <b>CLASS</b> = D1
<b>TEST</b>	AS 4586 APPENDIX C: Wet/Barefoot Ramp Test
<b>MEAN ANGLE OF INCLINATION</b>	= > 35° <b>CLASS</b> = C
<b>TEST</b>	AS 4586 APPENDIX D: Oil/Wet Ramp Test
<b>CORRECTED MEAN OVERALL ACCEPTANCE ANGLE</b>	= > 35° <b>CLASS</b> = R13

## LUMINANCE TESTING

Important information: To determine a luminance contrast between a substrate and the DTAC EDGING, see: AS 1428.1:2009.

<b>TEST</b>	AS 1428.1 APPENDIX B PARAGRAPH B3
<b>NATURAL</b>	
<b>LIGHT REFLECTANCE VALUE / WET</b>	= 2.23
<b>LIGHT REFLECTANCE VALUE / DRY</b>	= 2.62
<b>BLACK</b>	
<b>LIGHT REFLECTANCE VALUE / WET</b>	= 2.23
<b>LIGHT REFLECTANCE VALUE / DRY</b>	= 2.62

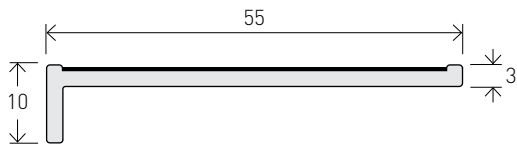
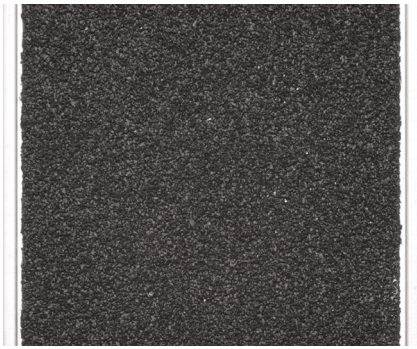
# PEMKO® SUEDE

## EDGING 10X55X3MM

### FINISHES & SIZES

#### AVAILABLE FINISHES & SIZES

##### HARD NATURAL ANODISED (25µm)



**CODE** DE0510C

**SIZE** H10 x W55 x T3 - L3200mm

##### HARD BLACK ANODISED (40µm)

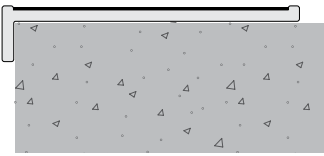


**CODE** DE0510B

**SIZE** H10 x W55 x T3 - L3200mm

# PEMKO® SUEDE EDGING 10X55X3MM INSTALLATION & APPLICATION

**SUBSTRATE** Stone / Masonry / Timber / Vinyl



**CODE** DE0510C / DE0510B

**FIXING** Adhesive

**SUBSTRATE** Vitrified Porcelain / Ceramics / Glass / Metals



**CODE** DE0510C / DE0510B

**FIXING** Adhesive

**NOTE** *Ensure grout line is  
discrete as illustrated*