

# PEMKO® URBAN CARPET EDGING SYSTEM 10X65X3MM

P5  
GRIP

## PRODUCT CODES: DESCRIPTION:

**DE0780B** **BLACK ANODISED**  
Black silicon carbide infill

<b>RANGE</b>	Stair Nosing & Edging
<b>DESIGN</b>	Urban
<b>MATERIAL</b>	6063 T5 extruded aluminium alloy with silicon carbide infill
<b>LOCATION</b>	Indoor



## FEATURES & BENEFITS

Continuous band of hard wearing, solid silicon carbide inserted into aluminium extrusions designed by DTAC in Australia

Suitable for all stable finished outdoor or indoor surfaces and substrates

Complies with the NCC (D4D4 Parts of buildings to be accessible) where stated and Disability (Access to Premises—Buildings) Standards to meet the deemed-to-satisfy-provisions

Complies with slip resistance requirements as detailed in HB 198

## SLIP RESISTANCE TESTING

Important information: To determine a classification of a slip resistance rating, see Australian Standards Hand Book 198 (HB 198), a Guide to the specification and testing of slip resistance of pedestrian surfaces. This document outlines the minimum ratings of a location and situation of a pedestrian surface.

**TEST** AS 4586 APPENDIX A: Wet Pendulum Test

**FOUR S 96 SLIDER** = 78 **CLASS** = P5

**TEST** AS 4586 APPENDIX B: Dry Floor Friction Test

**MEAN COF** = 0.90 **CLASS** = D1

**TEST** AS 4586 APPENDIX C: Wet/Barefoot Ramp Test

**MEAN ANGLE OF INCLINATION** = 36° **CLASS** = C

**TEST** AS 4586 APPENDIX D: Oil/Wet Ramp Test

**CORRECTED MEAN OVERALL ACCEPTANCE ANGLE** = 36° **CLASS** = R13

## LUMINANCE TESTING

Important information: To determine a luminance contrast between a substrate and the DTAC EDGING, see: AS 1428.1:2009.

**TEST** AS 1428.1 APPENDIX B PARAGRAPH B3

**BLACK**

**LIGHT REFLECTANCE VALUE / WET** = 2.51

**LIGHT REFLECTANCE VALUE / DRY** = 3.23

## FIRE TESTING

Important information: The results displayed in this document relate to the behaviour and environment of the product in the conditions to which the test was carried out. This is not intended to be the sole criterion for assessing the potential fire hazard of the product in use.

**TEST** AS/ISO 9239.1: Reaction to Fire Tests for Floor Coverings

**MEAN DISTANCE OF FLAME TRAVEL** = 5mm

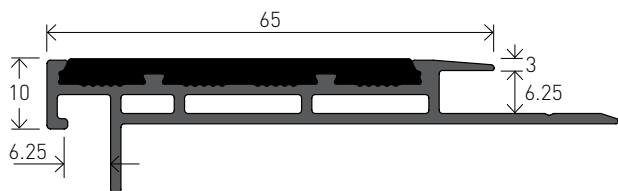
**AVERAGE CRITICAL RADIANT FLUX** = ≥ 11kW/m<sup>2</sup>

**AVERAGE INTEGRATED SMOKE VALUE** = 2% x min

# PEMKO® URBAN CARPET EDGING SYSTEM 10X65X3MM FINISHES & SIZES

## AVAILABLE FINISHES & SIZES

### HARD BLACK ANODISED (40µm)

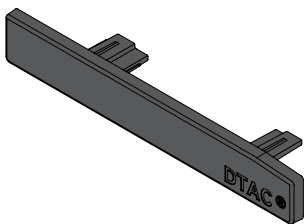


**CODE** DE0780B

**SIZE** H10 x W65 x T3 - L2500mm

Accepts carpet thickness of 6-10mm - carpet rebate 6.25mm

Colour matched escutcheon plates available for stairs with exposed ends



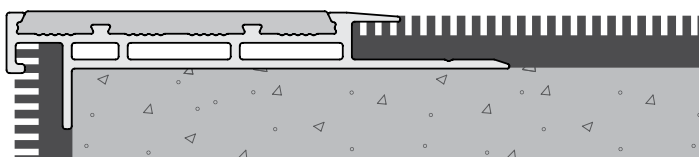
Escutcheon Plate - Black

**CODE** DESC04

**SIZE** H9.3 x W65 x T2.5

# PEMKO® URBAN CARPET EDGING SYSTEM 10X65X3MM INSTALLATION & APPLICATION

**SUBSTRATE** Carpet / Carpet Tiles

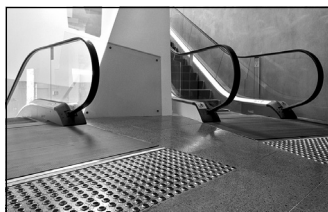


**CODE** DE0780C / DE0780B

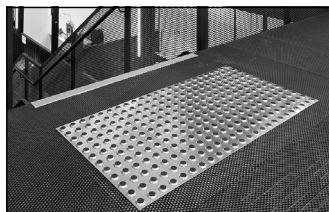
**FIXING** Adhesive

**NOTE** DTAC screw-fix mounting methods are available on request

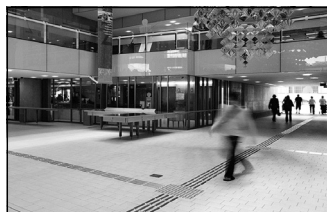
## OTHER DTAC PRODUCTS



WARNING TACTILES



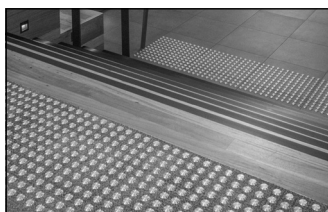
INTEGRATED TACTILES



DIRECTIONAL TACTILES



STAIR NOSING & EDGING



CARPET TACTILE SYSTEMS



THRESHOLDS & TRANSITION STRIPS



URBAN EDGE PROTECTORS



HANDRAIL TACTILE INDICATORS