

PEMKO® SUEDE CARPET EDGING SYSTEM 10X55X3MM

P5
GRIP

PRODUCT CODES: DESCRIPTION:

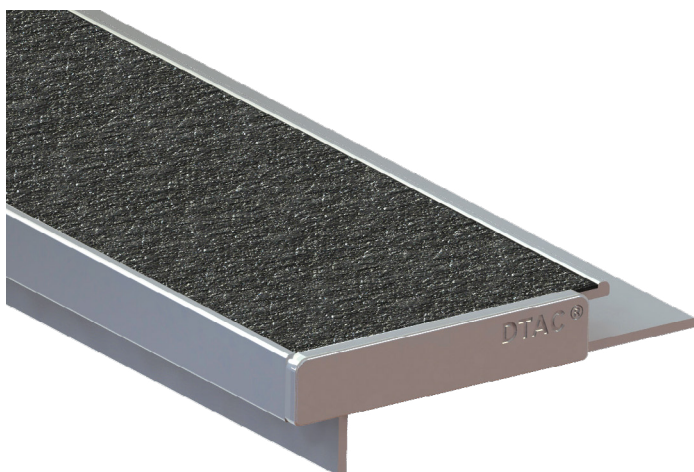
DE0670C NATURAL ANODISED
Silicon carbide tape

RANGE Stair Nosing & Edging

DESIGN Suede

MATERIAL 6063 T5 extruded aluminium alloy with silicon carbide tape

LOCATION Indoor



FEATURES & BENEFITS

Extruded continuous band of hard wearing silicon carbide inserted into cavities designed by DTAC in Australia

Suitable for all stable finished indoor surfaces and substrates only. Not suitable for external or wet areas.

Complies with the NCC (D4D4 Parts of buildings to be accessible) where stated and Disability (Access to Premises—Buildings) Standards to meet the deemed-to-satisfy-provisions

Complies with slip resistance requirements as detailed in HB 198

SLIP RESISTANCE TESTING

Important information: To determine a classification of a slip resistance rating, see Australian Standards Hand Book 198 (HB 198), a Guide to the specification and testing of slip resistance of pedestrian surfaces. This document outlines the minimum ratings of a location and situation of a pedestrian surface.

TEST AS 4586 APPENDIX A: Wet Pendulum Test

FOUR S 96 SLIDER = 78 CLASS = P5

TRL 55 SLIDER = 96 CLASS = P5

TEST AS 4586 APPENDIX B: Dry Floor Friction Test

MEAN COF = 1.05 CLASS = D1

TEST AS 4586 APPENDIX C: Wet/Barefoot Ramp Test

MEAN ANGLE OF INCLINATION => 35° CLASS = C

TEST AS 4586 APPENDIX D: Oil/Wet Ramp Test

CORRECTED MEAN OVERALL ACCEPTANCE ANGLE => 35° CLASS = R13

LUMINANCE TESTING

Important information: To determine a luminance contrast between a substrate and the DTAC EDGING, see: AS 1428.1:2009.

TEST AS 1428.1 APPENDIX B PARAGRAPH B3

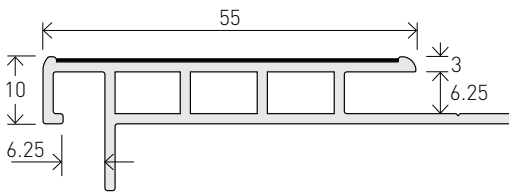
LIGHT REFLECTANCE VALUE / WET = 2.23

LIGHT REFLECTANCE VALUE / DRY = 2.62

PEMKO® SUEDE CARPET EDGING SYSTEM 10X55X3MM FINISHES & SIZES

AVAILABLE FINISHES & SIZES

HARD NATURAL ANODISED (25µm)

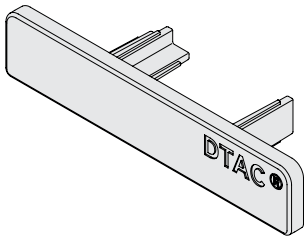


CODE DE0670C

SIZE H10 x W55 x T3 - L2500mm

Accepts carpet thickness of 6-10mm - carpet rebate 6.25mm

Colour matched escutcheon plates available for stairs with exposed ends



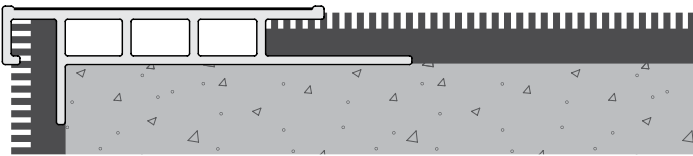
Escutcheon Plate - Grey

CODE DESC01

SIZE H10 x W50 x T2.5

PEMKO® SUEDE CARPET EDGING SYSTEM 10X55X3MM INSTALLATION & APPLICATION

SUBSTRATE Carpet / Carpet Tiles

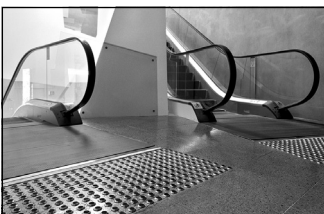


CODE DE0670C

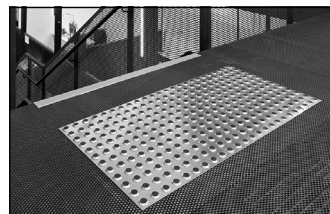
FIXING Adhesive

NOTE DTAC screw-fix mounting methods are available on request

OTHER DTAC PRODUCTS



WARNING TACTILES



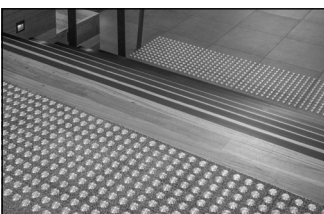
INTEGRATED TACTILES



DIRECTIONAL TACTILES



STAIR NOSING & EDGING



CARPET TACTILE SYSTEMS



THRESHOLDS & TRANSITION STRIPS



URBAN EDGE PROTECTORS



HANDRAIL TACTILE INDICATORS