

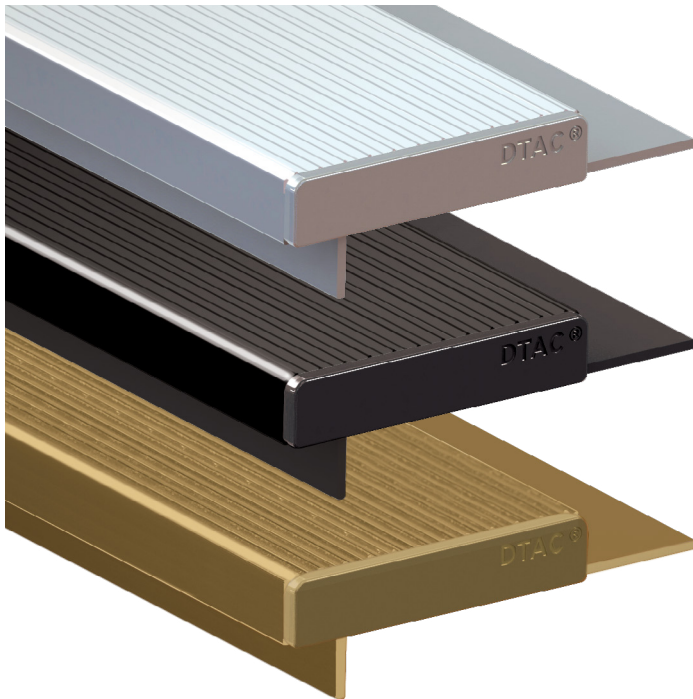
PEMKO® CORDUROY CARPET EDGING SYSTEM 10X50X3MM

P5
GRIP

PRODUCT CODES: DESCRIPTION:

DE0630C	NATURAL ANODISED
DE0630B	BLACK ANODISED
DE0630G	GOLD ANODISED

RANGE	Stair Nosing & Edging
DESIGN	Corduroy
MATERIAL	6063 T5 extruded aluminium alloy
LOCATION	Indoor



FEATURES & BENEFITS

Extruded continuous corduroy pattern designed by DTAC in Australia

Available in exclusive premium quality flat, angle or carpet profiles

Suitable for all stable finished indoor surfaces and substrates

Complies with the NCC (D4D4 Parts of buildings to be accessible) where stated and Disability (Access to Premises—Buildings) Standards to meet the deemed-to-satisfy-provisions

Complies with slip resistance requirements as detailed in HB 198

Registered Australian design

SLIP RESISTANCE TESTING

Important information: To determine a classification of a slip resistance rating, see Australian Standards Hand Book 198 (HB 198), a Guide to the specification and testing of slip resistance of pedestrian surfaces. This document outlines the minimum ratings of a location and situation of a pedestrian surface.

TEST	AS 4586 APPENDIX A: Wet Pendulum Test
FOUR S 96 SLIDER	= 63 CLASS = P5
TRL 55 SLIDER	= 66 CLASS = P5
TEST	AS 4586 APPENDIX B: Dry Floor Friction Test
MEAN COF	= 0.55 CLASS = D1
TEST	AS 4586 APPENDIX C: Wet/Barefoot Ramp Test
MEAN ANGLE OF INCLINATION	= 33° CLASS = C
TEST	AS 4586 APPENDIX D: Oil/Wet Ramp Test
CORRECTED MEAN OVERALL ACCEPTANCE ANGLE	= 31.7° CLASS = R12

LUMINANCE TESTING

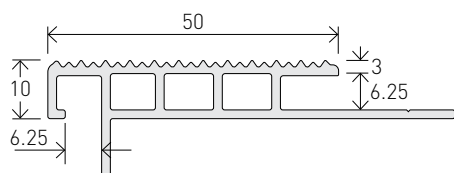
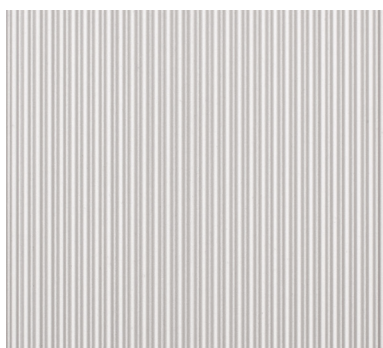
Important information: To determine a luminance contrast between a substrate and the DTAC EDGING, see: AS 1428.1:2009.

TEST	AS 1428.1 APPENDIX B PARAGRAPH B3
NATURAL	
LIGHT REFLECTANCE VALUE / WET	= 36.09
LIGHT REFLECTANCE VALUE / DRY	= 35.90
BLACK	
LIGHT REFLECTANCE VALUE / WET	= 1.44
LIGHT REFLECTANCE VALUE / DRY	= 1.48
GOLD	
LIGHT REFLECTANCE VALUE / WET	= 31.32
LIGHT REFLECTANCE VALUE / DRY	= 32.34

PEMKO® CORDUROY CARPET EDGING SYSTEM 10X50X3MM FINISHES & SIZES

AVAILABLE FINISHES & SIZES

HARD NATURAL ANODISED (25µm)



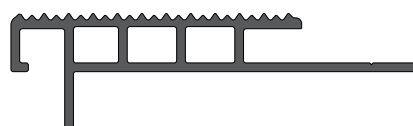
CODE DE0630C

SIZE H10 x W50 x T3 - L3200mm

Accepts carpet thickness of 6-10mm - carpet rebate 6.25mm

Colour matched escutcheon plates available for stairs with exposed ends

HARD BLACK ANODISED (40µm)



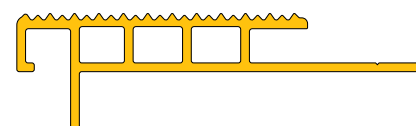
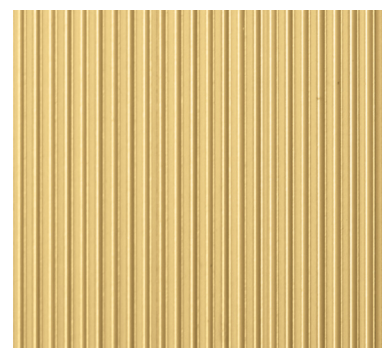
CODE DE0630B

SIZE H10 x W50 x T3 - L3200mm

Accepts carpet thickness of 6-10mm - carpet rebate 6.25mm

Colour matched escutcheon plates available for stairs with exposed ends

GOLD ANODISED (10µm)

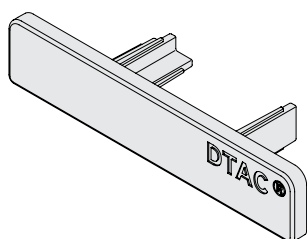


CODE DE0630G

SIZE H10 x W50 x T3 - L2500mm

Accepts carpet thickness of 6-10mm - carpet rebate 6.25mm

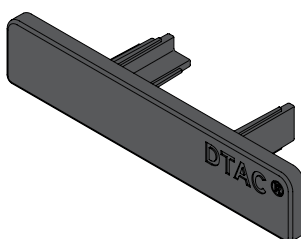
Escutcheon plates available for stairs with exposed ends



Escutcheon Plate - Grey

CODE DESC01

SIZE H10 x W50 x T2.5



Escutcheon Plate - Black

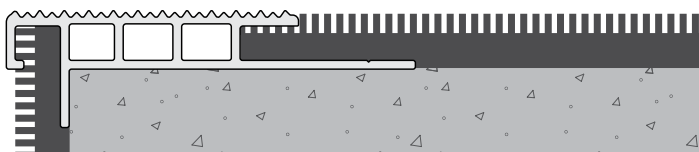
CODE DESC02

SIZE H10 x W50 x T2.5

PEMKO® CORDUROY CARPET EDGING SYSTEM 10X50X3MM

INSTALLATION & APPLICATION

SUBSTRATE Carpet / Carpet Tiles

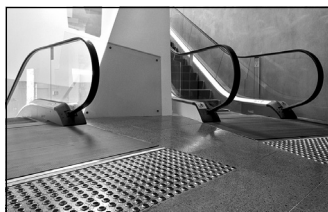


CODE DE0630C / DE0630B / DE0630G

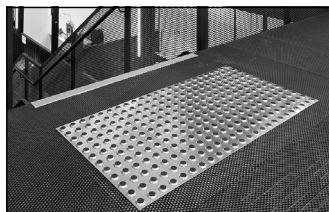
FIXING Adhesive

NOTE DTAC screw-fix mounting methods are available on request

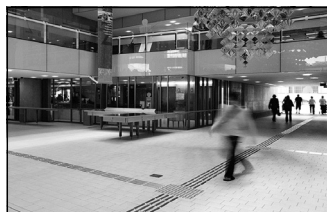
OTHER DTAC PRODUCTS



WARNING TACTILES



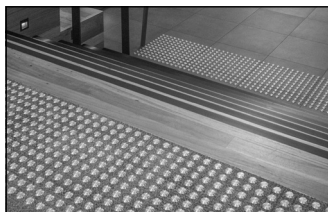
INTEGRATED TACTILES



DIRECTIONAL TACTILES



STAIR NOSING & EDGING



CARPET TACTILE SYSTEMS



THRESHOLDS & TRANSITION STRIPS



URBAN EDGE PROTECTORS



HANDRAIL TACTILE INDICATORS