

URETHANE CLASSIC DIRECTIONAL TACTILE (BLACK)

P4
GRIP

PRODUCT CODE: DIRP0705B

RANGE	Directional Tactile
DESIGN	Classic
MATERIAL	UV stabilised thermo plastic urethane (TPU)
LOCATION	Indoor or Outdoor



FEATURES & BENEFITS

Injection moulded, undulating groove design on the horizontal face with a smooth outer edge

Designed to comply with AS/NZS 1428.4.1 (Section 3.2 Directional TGSIs)

Complies with the NCC (D4D9 Tactile Indicators) and Disability (Access to Premises—Buildings) standards to meet the deemed-to-satisfy provisions

Complies with slip resistance requirements as detailed in HB 198

Identifiable by the unique “double lip” design, providing a distinct advantage when it comes to high slip resistance

Custom colours available (subject to MOQ)

Made in Australia

SLIP RESISTANCE TESTING

Important information: To determine a classification of a slip resistance rating, see Australian Standards Hand Book 198 (HB 198), a Guide to the specification and testing of slip resistance of pedestrian surfaces. This document outlines the minimum ratings of a location and situation of a pedestrian surface.

TEST	AS 4586 APPENDIX A: Wet Pendulum Test
FOUR S 96 SLIDER	= 50 CLASS = P4
TRL 55 SLIDER	= 42 CLASS = P4
TEST	AS 4586 APPENDIX B: Dry Floor Friction Test
MEAN COF	= 0.85 CLASS = D1
TEST	AS 4586 APPENDIX C: Wet/Barefoot Ramp Test
MEAN ANGLE OF INCLINATION	= 20° CLASS = B
TEST	AS 4586 APPENDIX D: Oil/Wet Ramp Test
CORRECTED MEAN OVERALL ACCEPTANCE ANGLE	= 11° CLASS = R10

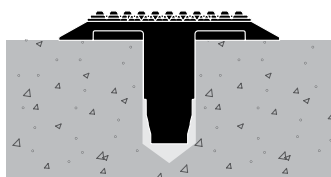
LUMINANCE TESTING

Important information: To determine a luminance contrast between a substrate and the DTAC TGSi, see: AS/NZS 1428.4.1:2009.

TEST	AS/NZS 1428.4.1 APPENDIX E PARAGRAPH E3
LIGHT REFLECTANCE VALUE / WET	= 2.47
LIGHT REFLECTANCE VALUE / DRY	= 2.66

URETHANE CLASSIC DIRECTIONAL TACTILE (BLACK) INSTALLATION & APPLICATION

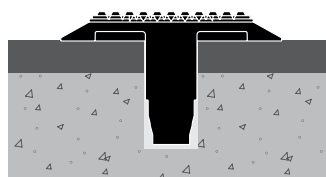
SUBSTRATE Stone / Masonry / Timber / Vinyl



CODE DIRP0705B

FIXING Drill and pressure fit
(M8 x 25mm hole)

SUBSTRATE Vitrified Porcelain / Ceramics / Glass / Metals



CODE DIRP0705B

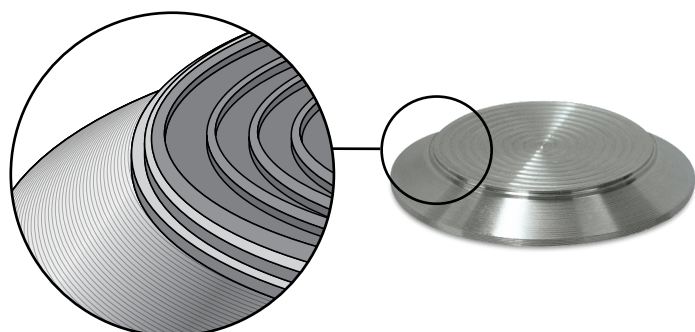
FIXING Drill and pressure fit
(M8 x 25mm hole)

SIDE PROFILE



CODE DIRP0705B

SIZE L290 x W35 x H5mm



THE DTAC DIFFERENCE

DTAC Warning Tactiles are identifiable by the unique “double lip” design, providing a distinct advantage when it comes to high slip resistance.

Warning Tactile's are a series of raised dots that are installed on pedestrian surfaces. They assist in the orientation of the vision impaired and give tactile warning so they may safely navigate the built environment.

With an extensive range of designs and colours, DTAC work closely with architects, specifiers and builders to exceed design and aesthetic expectations on every project.

- Available in a range of colours and designs to suit all applications
- Solutions for all stable surfaces and substrates
- Designed to comply with building codes and regulations
- Tested for luminance and slip resistance requirements.