



# INSTALLATION MANUAL

## ULTIMAT<sup>®</sup> / ULTIMAT DUO<sup>®</sup> TACTILES

**DTAC PTY LTD**  
ABN 41 093 070 127

Unit 4, 11-12 Phillip Court  
Port Melbourne Victoria  
Australia 3207

PO Box 5059  
South Melbourne Victoria  
Australia 3205

PEMKO<sup>®</sup>  
T 1300 793 478

[estimating@dtac.com.au](mailto:estimating@dtac.com.au)  
[dtac.com.au](http://dtac.com.au)

© DTAC Pty Ltd 2025

## USER/INSTALLER

It is imperative that everyone installing DTAC products carefully read this document prior to commencement of installation. DTAC Pty Ltd will not be held liable for the misuse of their products or any damage whatsoever caused as a result of non-compliance with procedures as described in this document.

DTAC Pty Ltd will only honour the product guarantee for the DTAC Tactiles when the product has been installed in accordance with the specified instructions, equipment and products as described within this document.

## TABLE OF CONTENTS

<b>EQUIPMENT REQUIRED FOR INSTALLATION</b> .....	3
<b>PREPARING THE SUBSTRATE</b> .....	4
<b>PREPARING THE ULTIMAT® TACTILES</b> .....	5
<b>ULTIMAT® TACTILE APPLICATION</b> .....	5

## IMPORTANT NOTICE

The user/installer is responsible for determining whether the adhesive product is fit for a particular purpose and suitable for the user's/installer's method of application. Please remember that many factors can affect the use and performance of an adhesive product in a particular application.

The factors include but are not limited to: the surface preparation of those materials, the product selected for use, the condition in which the product is used and the time and environmental conditions in which the product is expected to perform.

Given the many factors that can affect the use and performance of an adhesive product, some of which are uniquely within the user's/installer's knowledge and control, it is essential the user/installer evaluate the adhesive product to determine where it is fit for a particular purpose and suitable for the user's/installer's method of application.

If in doubt, always consult with a DTAC Technical Representative prior to commencement of any works.

**NOTE:** The user/installer should at all times observe the manufacturer's specifications and if required, seek additional information from an authorised DTAC representative.

**O.H.S.:** The user/installer should read in full and be familiar with the precautions to take to ensure the safe use of DTAC products. When using adhesives and cleaners, DTAC recommends wearing latex or vinyl gloves and a respirator that complies with Australia Standards AS1715 & AS1716.

## PLEASE NOTE THE FOLLOWING BEFORE PROCEEDING

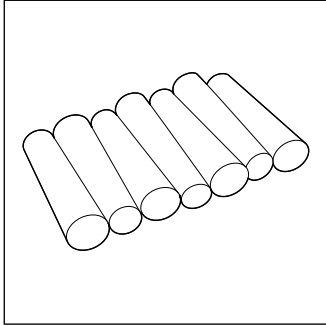
1. Ensure the day of installation is clear of rain and no frost is expected.
2. All surfaces must be structurally sound, clean, dry and free of any oil, grease, dust, dirt, moisture and other contaminants.
3. Concrete floors must be 25MPa or greater and have a moisture content below 5.5% as per ASDR99463 Sept. 1999.
4. Newly laid concrete must be cured for at least three weeks.
5. Concrete surfaces must be mechanically abraded with an angle grinder fitted with a general purpose diamond grinding cup before proceeding to installation to remove wax or chlorine curing agents which may be present on the surface of the concrete.
6. Expansion joints must be sufficiently caulked with SikaHyflex Grey - 250 Facade before installation.
7. Failure to follow these instructions will void warranty.
8. The backs of the DTAC Ultimat® Tactiles must be abraded before installing - see Page 5.
9. The laying of the DTAC Ultimat® Tactiles must be the final works to the concrete surface, e.g. no moisture curing agents, surface treatments, pressure cleaning or sealers are to be applied after the Ultimat® Tactile installation.

## LIGHT REFLECTANCE VALUE (LRV)

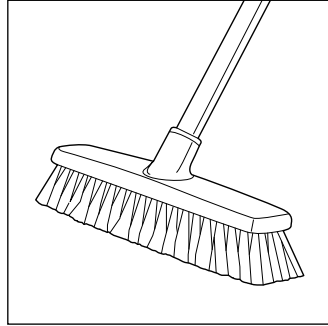
**IMPORTANT:** An LRV testing review is required prior to installation.

To determine a luminance contrast between a substrate and the DTAC Tactile, see: AS/NZS 1428.4.1:2009 and AS 1428.1:2021.

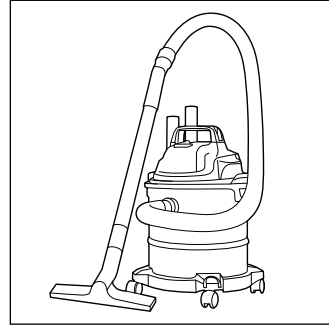
## EQUIPMENT REQUIRED FOR INSTALLATION



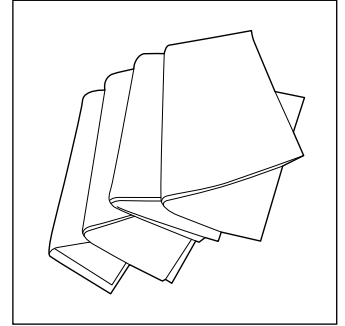
Chalk



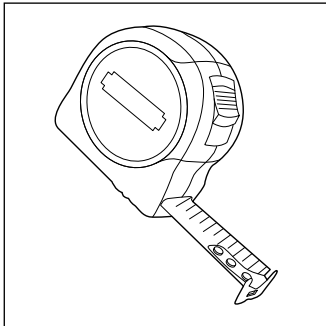
Broom



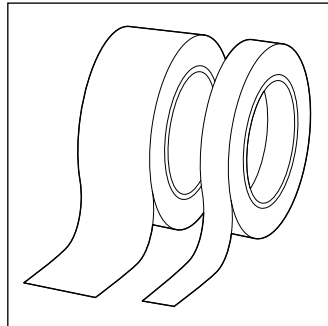
Vacuum



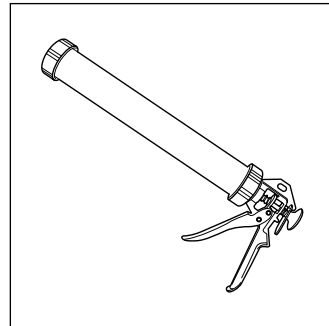
Clean Cloths



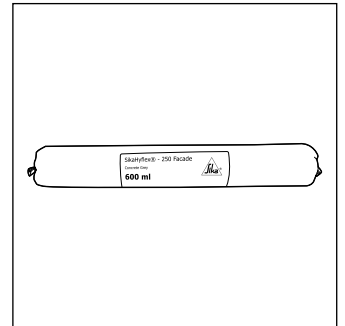
Measuring Tape



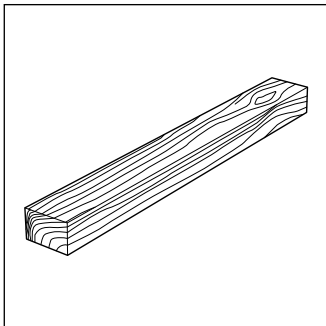
3M Green Masking Tape -  
12/36mm (Product Codes  
DTC0060 & DTC0050)



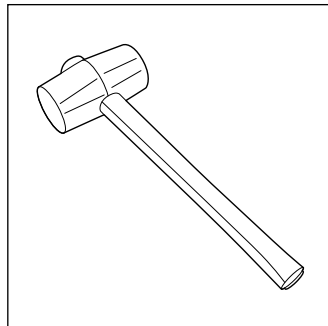
DTAC Caulking Gun  
(Product Code: DTC0460)



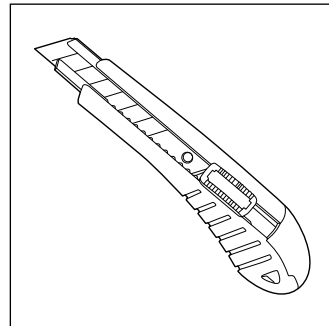
SikaHyflex Grey - 250 Facade  
(600ml Sausage)  
(Product Code: DTC0450)



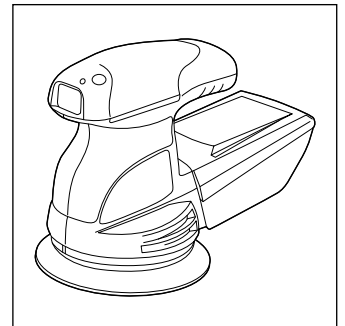
Wooden Block



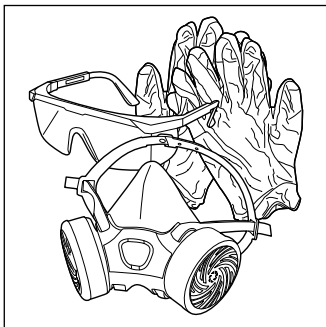
Rubber Mallet



Knife



Orbital Sander and 60 Grit Pad

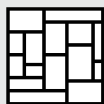


Safety Gear

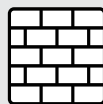
## RECOMMENDED SUBSTRATES



Concrete



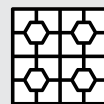
Stone



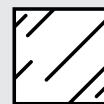
Masonry



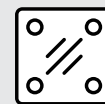
Vinyl



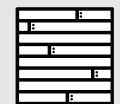
Ceramics



Glass



Metal

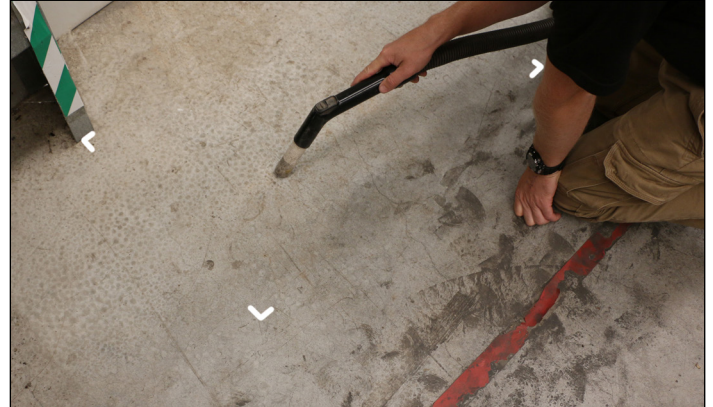


Timber

## PREPARING THE SUBSTRATE



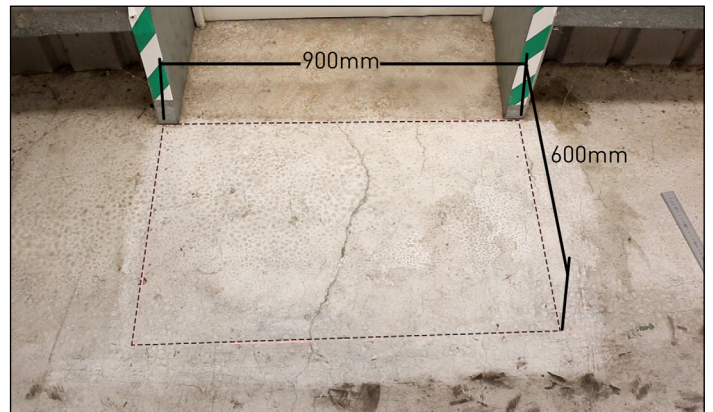
1. Ensure surface area is completely dry and as flat as possible.



4. Vacuum marked area to further remove dust, dirt and debris.



2. Roughly measure area for Ultimat® Tactiles and corner off with chalk. *Note: A 3mm gap needs to be allowed for between each Ultimat® Tactile.*



5. Accurately measure and mark out area with a chalk line. A 3mm gap needs to be allowed for between each Ultimat® Tactile.



3. Sweep surface area with a broom to remove unwanted dust, dirt and debris.

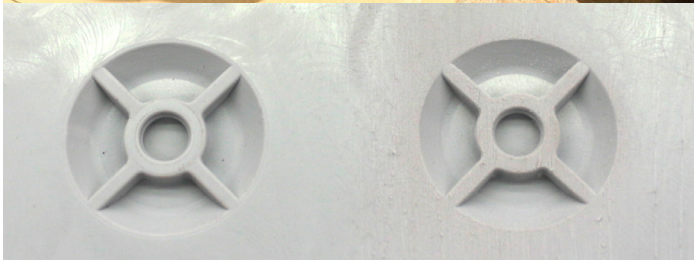


6. Apply masking tape along the outside of the chalked line.

## PREPARING THE ULTIMAT® TACTILES

**IMPORTANT:** Before installing the DTAC Ultimat® Tactiles, abrade the back of each tile with an Orbital Sander using a 60 grit pad.

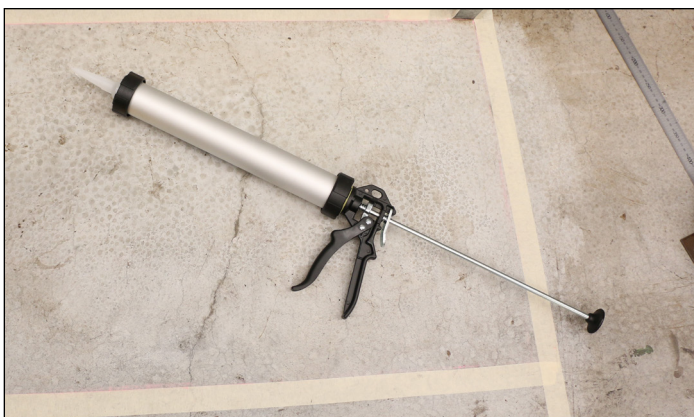
This is to etch the back of the Ultimat® Tactile and remove any dirt, dust or oils to allow the adhesive to bond to the surface.



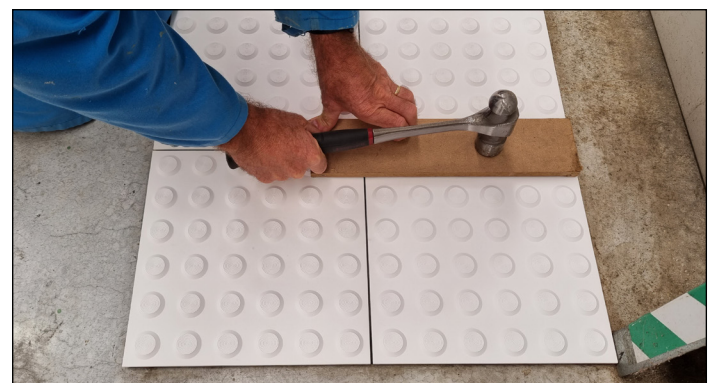
BEFORE SANDING

AFTER SANDING

## ULTIMAT® TACTILE APPLICATION

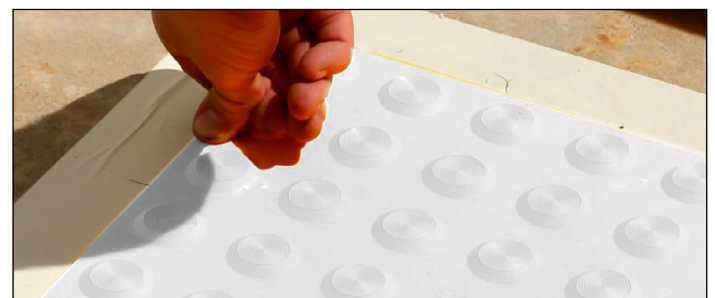


1. Using the applicator gun, apply SikaHyflex Grey - 250 Facade to the surface area following the pattern as shown on the top right of this page using a bead size of 8-10mm. Follow adhesive safety precautions.



2. Lay the DTAC Ultimat® Tactile squarely to the marked lines with a 3mm gap between Ultimat's.

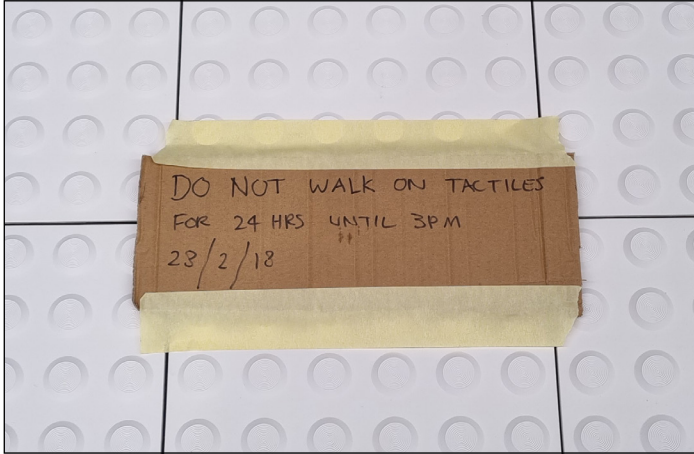
Once all Ultimat® Tactiles are laid down, tap each one using a wooden block and hammer or rubber mallet to ensure adhesive forms a complete seal under each tactile.



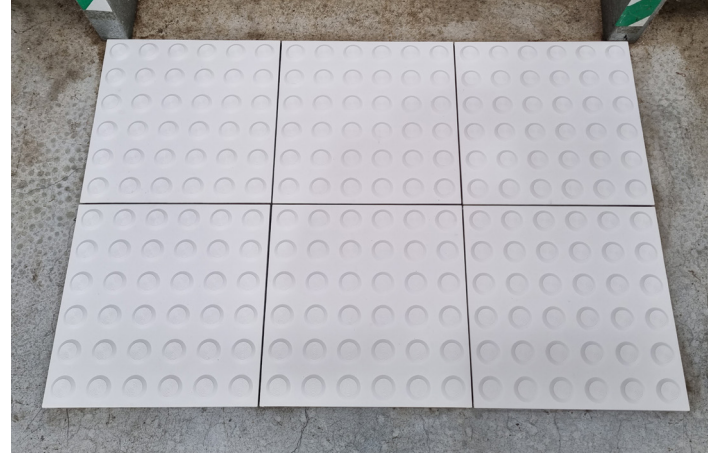
3. Ensure all raised areas are flat by applying pressure especially to edges and corners.

## ULTIMAT® TACTILE APPLICATION

- Remove the excess adhesive along the edges with a sharp utility knife and remove the masking tape.



- Tape a sign stating the tactiles must not be walked on within 24 hours after install to allow the adhesive to bond.



- The Ultimat® Tactiles are ready for pedestrian foot traffic 24 hours after installation.

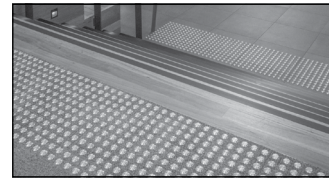
## OTHER DTAC PRODUCTS



WARNING TACTILES



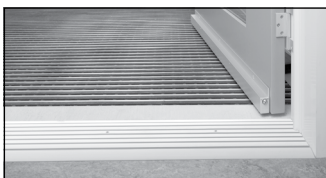
DIRECTIONAL TACTILES



CARPET TACTILE SYSTEMS



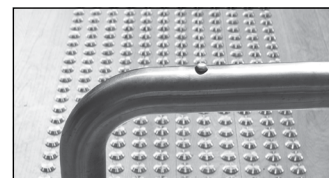
STAIR NOSING & EDGING



THRESHOLDS & TRANSITION STRIPS



URBAN EDGE PROTECTORS



HANDRAIL TACTILE INDICATORS



CONSUMABLES