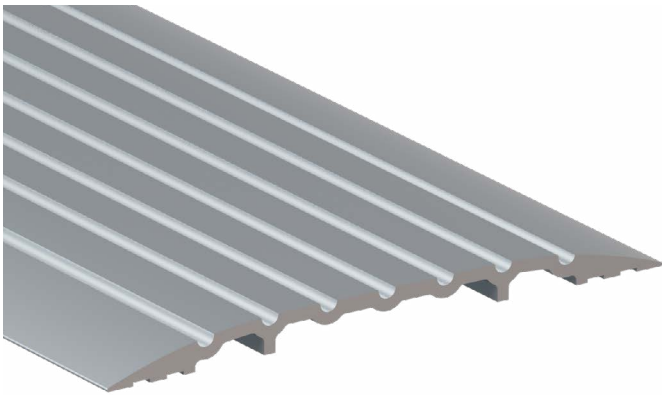


PEMKO® THRESHOLD PLATE 100X6 NATURAL ANODISED ALUMINIUM

TYPE	Threshold Plate
RANGE	Pemko® Thresholds & Transition Strips
LOCATION	Door sill
MATERIAL	6060 T5 extruded aluminium alloy
FINISH	Anodised



FEATURES

A low profile threshold plate that can be used in conjunction with door bottom seals to prevent rain, draughts, noise and smoke infiltration.

Suitable for use with most floor pivots.

Suitable for door sill applications

Backed by 2 year warranty

APPROVALS

ACCESS & MOBILITY

AUS: NCC D2.15 & D3.3. AS1428.1

NZ: NZ BC Compliance Doc. D1/AS1 1.3.2

UK/EU: Approved Document M

FIRE

AUS/NZ: NCC Spec. C3.4. AS1530.4 & AS/NZS 1905.1.
NZ BC Compliance Doc. C/AS1 6.19.2(a) & App. C6.1.1.

UK/EU: Approved Document B. BS 476 Pt. 20 & 22
(similar to BS EN 1634-1).

FRL & FRR-/240/30 and FD180

BAL – FZ when used with a BAL rated door bottom seal
in accordance with AS3959.

DTAC PTY LTD
ABN 41 093 070 127

Unit 4, 11-12 Phillip Court
Port Melbourne Victoria
Australia 3207

PO Box 5059
South Melbourne Victoria
Australia 3205

PEMKO®

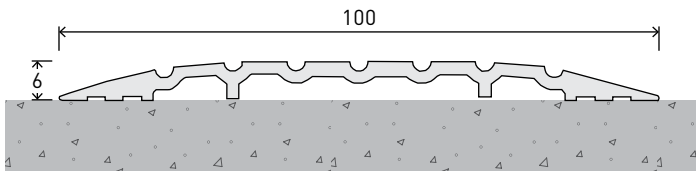
T 1300 793 478
F 1300 780 628

estimating@dtac.com.au
www.dtac.com.au

© DTAC Pty Ltd 2021

PEMKO® THRESHOLD PLATE 100X6 INSTALLATION & APPLICATION

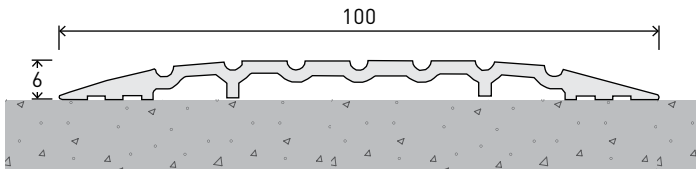
LOCATION Door sill



CODE DP1161

SIZE W100 x H6 - L1000

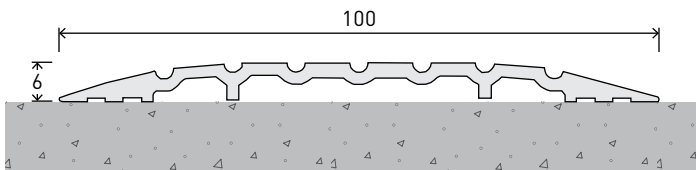
FIXING Screw-fixed or adhesive (screws supplied)



CODE DP1162

SIZE W100 x H6 - L2000

FIXING Screw-fixed or adhesive (screws supplied)



CODE DP1163

SIZE W100 x H6 - L3000

FIXING Screw-fixed or adhesive (screws supplied)