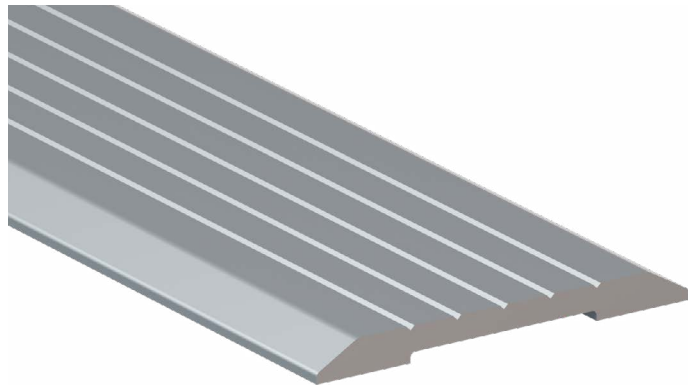


PEMKO® RIBBED THRESHOLD PLATE 40X3 NATURAL ANODISED ALUMINIUM

TYPE	Threshold Plate
RANGE	Pemko® Thresholds & Transition Strips
LOCATION	Door sill
MATERIAL	6060 T5 extruded aluminium alloy
FINISH	Anodised



FEATURES

A low profile threshold plate that can be used in conjunction with door bottom seals to prevent rain, draught, noise and smoke infiltration.

Suitable for door sill applications

Backed by 2 year warranty

APPROVALS

UL: R37913

ACCESS & MOBILITY

AUS: NCC D2.15 & D3.3. AS1428.1

NZ: NZ BC Compliance Doc. D1/AS1 1.3.2

UK/EU: Approved Document M

FIRE

AUS/NZ: NCC Spec. C3.4. AS1530.4 & AS/NZS 1905.1.
NZ BC Compliance Doc. C/AS1 6.19.2(a) & App. C6.1.1.

UK/EU: Approved Document B. BS 476 Pt. 20 & 22
(similar to BS EN 1634-1).

FRL & FRR-/240/30 and FD240

BAL – FZ when used with a BAL rated door bottom seal
in accordance with AS3959.

DTAC PTY LTD
ABN 41 093 070 127

PEMKO®

Unit 4, 11-12 Phillip Court
Port Melbourne Victoria
Australia 3207

T 1300 793 478
F 1300 780 628

PO Box 5059
South Melbourne Victoria
Australia 3205

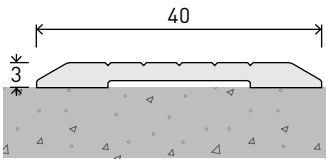
estimating@dtac.com.au
www.dtac.com.au

© DTAC Pty Ltd 2021

PEMKO® RIBBED THRESHOLD PLATE 40X3

INSTALLATION & APPLICATION

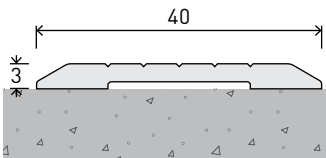
LOCATION Door sill



CODE DP0951

SIZE W40 x H3 - L1000

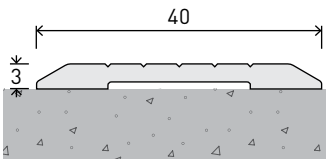
FIXING Screw-fixed or adhesive
(screws supplied)



CODE DP0952

SIZE W40 x H3 - L2000

FIXING Screw-fixed or adhesive
(screws supplied)



CODE DP0953

SIZE W40 x H3 - L3000

FIXING Screw-fixed or adhesive
(screws supplied)