

TACTILE CLASSIC PVD BLACK STAINLESS STEEL (316)



TYPE	Tactile Ground Surface Indicator
RANGE	Warning Tactile
DESIGN	Classic
MATERIAL	316 marine grade stainless steel
FINISH	Machined
DIMENSIONS	OUTER DIA: 35mm TOP DIA: 25mm THICKNESS: 5mm



FEATURES

Machined, concentric circle design on the horizontal face with a smooth outer edge

Complies with the NCC (D3.8 Tactile Indicators) and Disability (Access to Premises—Buildings) standards to meet the deemed-to-satisfy-provisions

Complies with slip resistance requirements as detailed in HB 198

Backed by 2 year warranty

Registered design

SLIP RESISTANCE TESTING

Important information: To determine a classification of a slip resistance rating, see Australian Standards Hand Book 198 (HB 198), a Guide to the specification and testing of slip resistance of pedestrian surfaces. This document outlines the minimum ratings of a location and situation of a pedestrian surface.

TEST	AS 4586 APPENDIX A: Wet Pendulum Test
FOUR S 96 SLIDER	= 91 CLASS = P5
TRL 55 SLIDER	= 80 CLASS = P5

LUMINANCE TESTING

Important information: To determine a luminance contrast between a substrate and the DTAC TGSI, see: AS/NZS 1428.4.1:2009. DTAC can test your substrate for luminance contrast to give you peace of mind that your DTAC project will be fully compliant to AS/NZS 1428.4.1 Appendix E.

TEST	AS/NZS 1428.4.1 APPENDIX E PARAGRAPH E3
LUMINANCE REFLECTANCE RATING / WET	= 7.1
LUMINANCE REFLECTANCE RATING / DRY	= 8.7

DTAC PTY LTD
ABN 41 093 070 127

Unit 4, 11-12 Phillip Court
Port Melbourne Victoria
Australia 3207

PO Box 5059
South Melbourne Victoria
Australia 3205

T 1300 793 478
F 1300 780 628

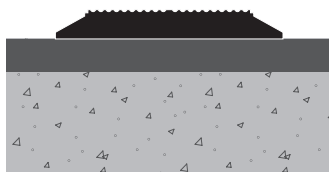
estimating@dtac.com.au
www.dtac.com.au

© DTAC Pty Ltd 2020

TACTILE CLASSIC PVD BLACK

INSTALLATION & APPLICATION

SUBSTRATE Vitrified Porcelain / Ceramics / Glass / Metals



CODE DT0123

FIXING Direct stick

NOTE Any thick or thin non
drillable substrate
