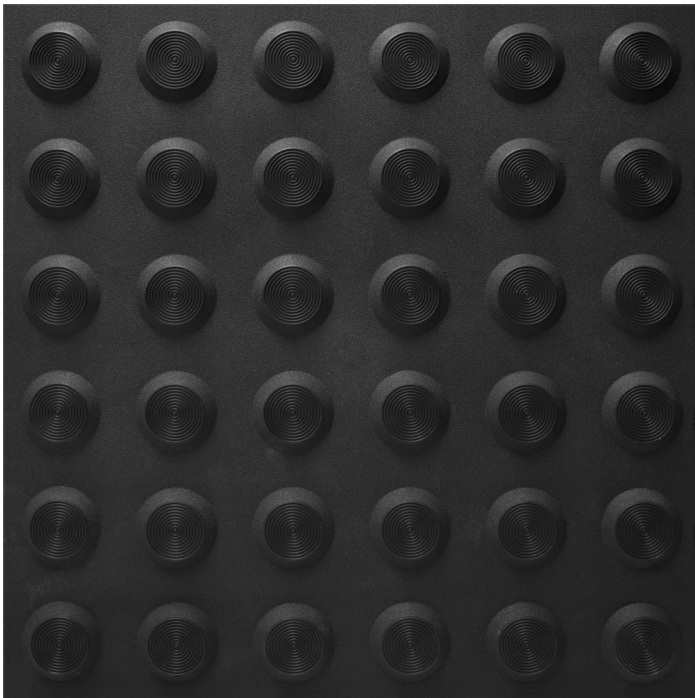


ULTIMAT™ TACTILE CLASSIC BLACK URETHANE



TYPE	Tactile Ground Surface Indicator
RANGE	Integrated Tactile
DESIGN	Classic
MATERIAL	UV stabilised thermo plastic urethane (TPU)
FINISH	Injection moulded
DIMENSIONS	H300 x W300 x T2mm



FEATURES

Injection moulded, concentric circle design on the horizontal face with a smooth outer edge

Complies with the NCC (D3.8 Tactile Indicators) and Disability (Access to Premises—Buildings) standards to meet the deemed-to-satisfy-provisions

Complies with slip resistance requirements as detailed in HB 198

Backed by 2 year warranty

SLIP RESISTANCE TESTING

Important information: To determine a classification of a slip resistance rating, see Australian Standards Hand Book 198 (HB 198), a Guide to the specification and testing of slip resistance of pedestrian surfaces. This document outlines the minimum ratings of a location and situation of a pedestrian surface.

TEST	AS 4586 APPENDIX A: Wet Pendulum Test
FOUR S 96 SLIDER	= 71 CLASS = P5
TRL 55 SLIDER	= 66 CLASS = P5

TEST	AS 4586 APPENDIX C: Wet/Barefoot Ramp Test
MEAN ANGLE OF INCLINATION	= 20° CLASS = B

TEST	AS 4586 APPENDIX D: Oil/Wet Ramp Test
CORRECTED MEAN OVERALL ACCEPTANCE ANGLE	= 19° CLASS = R11

LUMINANCE TESTING

Important information: To determine a luminance contrast between a substrate and the DTAC TGSI, see: AS/NZS 1428.4.1:2009. DTAC can test your substrate for luminance contrast to give you peace of mind that your DTAC project will be fully compliant to AS/NZS 1428.4.1 Appendix E.

TEST	AS/NZS 1428.4.1 APPENDIX E PARAGRAPH E3
LUMINANCE REFLECTANCE RATING / WET	= 2.76
LUMINANCE REFLECTANCE RATING / DRY	= 3.05

FIRE TESTING

Important information: The results displayed in this document relate to the behaviour and environment of the product in the conditions to which the test was carried out. This is not intended to be the sole criterion for assessing the potential fire hazard of the product in use.

TEST	AS/ISO 9239.1: Reaction to Fire Tests for Floor Coverings
MEAN DISTANCE OF FLAME TRAVEL	= 660mm
AVERAGE CRITICAL RADIANT FLUX	= 2.2kW/m ²
AVERAGE INTEGRATED SMOKE VALUE	= 522% x min

DTAC PTY LTD
ABN 41 093 070 127

Unit 4, 11-12 Phillip Court
Port Melbourne Victoria
Australia 3207

PO Box 5059
South Melbourne Victoria
Australia 3205

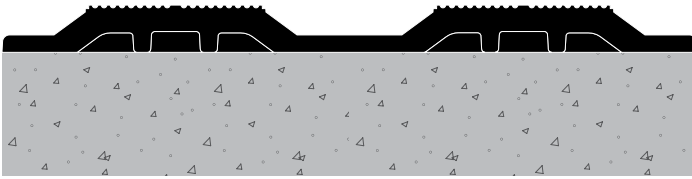
T 1300 793 478
F 1300 780 628

estimating@dtac.com.au
www.dtac.com.au

© DTAC Pty Ltd 2018

ULTIMAT™ TACTILE CLASSIC BLACK APPLICATION

SUBSTRATE Stone / Masonry / Timber / Vinyl

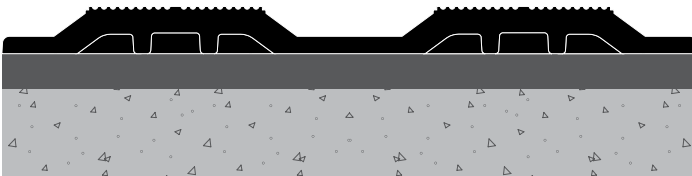


CODE DWU0010

FIXING Direct stick with DTAC Anchor Adhesive

NOTE Installed on top of or installed in an existing recess made to suit the multiples of the 300 x 300mm tile.

SUBSTRATE Vitrified Porcelain / Ceramics / Glass / Metals



CODE DWU0010

FIXING Direct stick with DTAC Anchor Adhesive

NOTE Installed on top of or installed in an existing recess made to suit the multiples of the 300 x 300mm tile.