

TACTILE TERRACED BLACK TOP STAINLESS STEEL (316)



TYPE	Tactile Ground Surface Indicator
RANGE	Warning Tactile
DESIGN	Terraced Black Top
MATERIAL	316 marine grade stainless steel
FINISH	Machined / Moulded
DIMENSIONS	OUTER DIA: 35mm TOP DIA: 25mm THICKNESS: 5mm SHAFT: M6mm x 18mm



FEATURES

Moulded, concentric circle design on the horizontal face with a terraced slip resistant machined outer edge

Complies with the NCC (D3.8 Tactile Indicators) and Disability (Access to Premises—Buildings) standards to meet the deemed-to-satisfy-provisions

Complies with slip resistance requirements as detailed in HB 198

Backed by 2 year warranty

Registered design, Patent pending

SLIP RESISTANCE TESTING

Important information: To determine a classification of a slip resistance rating, see Australian Standards Hand Book 198 (HB 198), a Guide to the specification and testing of slip resistance of pedestrian surfaces. This document outlines the minimum ratings of a location and situation of a pedestrian surface.

TEST AS 4586 APPENDIX A: Wet Pendulum Test

FOUR S 96 SLIDER = 103 **CLASS** = P5

TRL 55 SLIDER = 83 **CLASS** = P5

TEST AS 4586 APPENDIX C: Wet/Barefoot Ramp Test

MEAN ANGLE OF INCLINATION = >35° **CLASS** = C

TEST AS 4586 APPENDIX D: Oil/Wet Ramp Test

CORRECTED MEAN OVERALL ACCEPTANCE ANGLE = 26.2° **CLASS** = R11

LUMINANCE TESTING

Important information: To determine a luminance contrast between a substrate and the DTAC TGSI, see: AS/NZS 1428.4.1:2009. DTAC can test your substrate for luminance contrast to give you peace of mind that your DTAC project will be fully compliant to AS/NZS 1428.4.1 Appendix E.

TEST AS/NZS 1428.4.1 APPENDIX E PARAGRAPH E3

LUMINANCE REFLECTANCE RATING / WET = 5.6

LUMINANCE REFLECTANCE RATING / DRY = 5.9

DTAC PTY LTD
ABN 41 093 070 127

Unit 4, 11-12 Phillip Court
Port Melbourne Victoria
Australia 3207

PO Box 5059
South Melbourne Victoria
Australia 3205

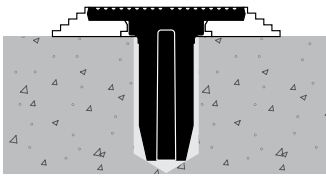
T 1300 793 478
F 1300 780 628

estimating@dtac.com.au
www.dtac.com.au

© DTAC Pty Ltd 2018

TACTILE TERRACED BLACK TOP INSTALLATION & APPLICATION

SUBSTRATE Stone / Masonry / Timber / Vinyl

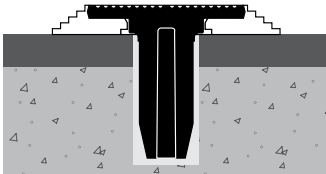


CODE DT0210

FIXING Drill and pressure fit

NOTE Any thick substrate where maximum hold is required without chemical anchoring

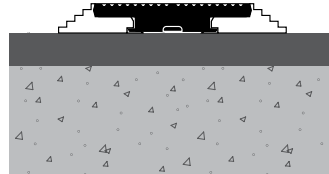
SUBSTRATE Vitrified Porcelain / Ceramics / Glass / Metals



CODE DT0210

FIXING Diamond core/pressure fit

NOTE Any thick substrate where maximum hold is required without chemical anchoring



CODE DT0211

FIXING Direct stick

NOTE Any thick or thin non drillable substrate